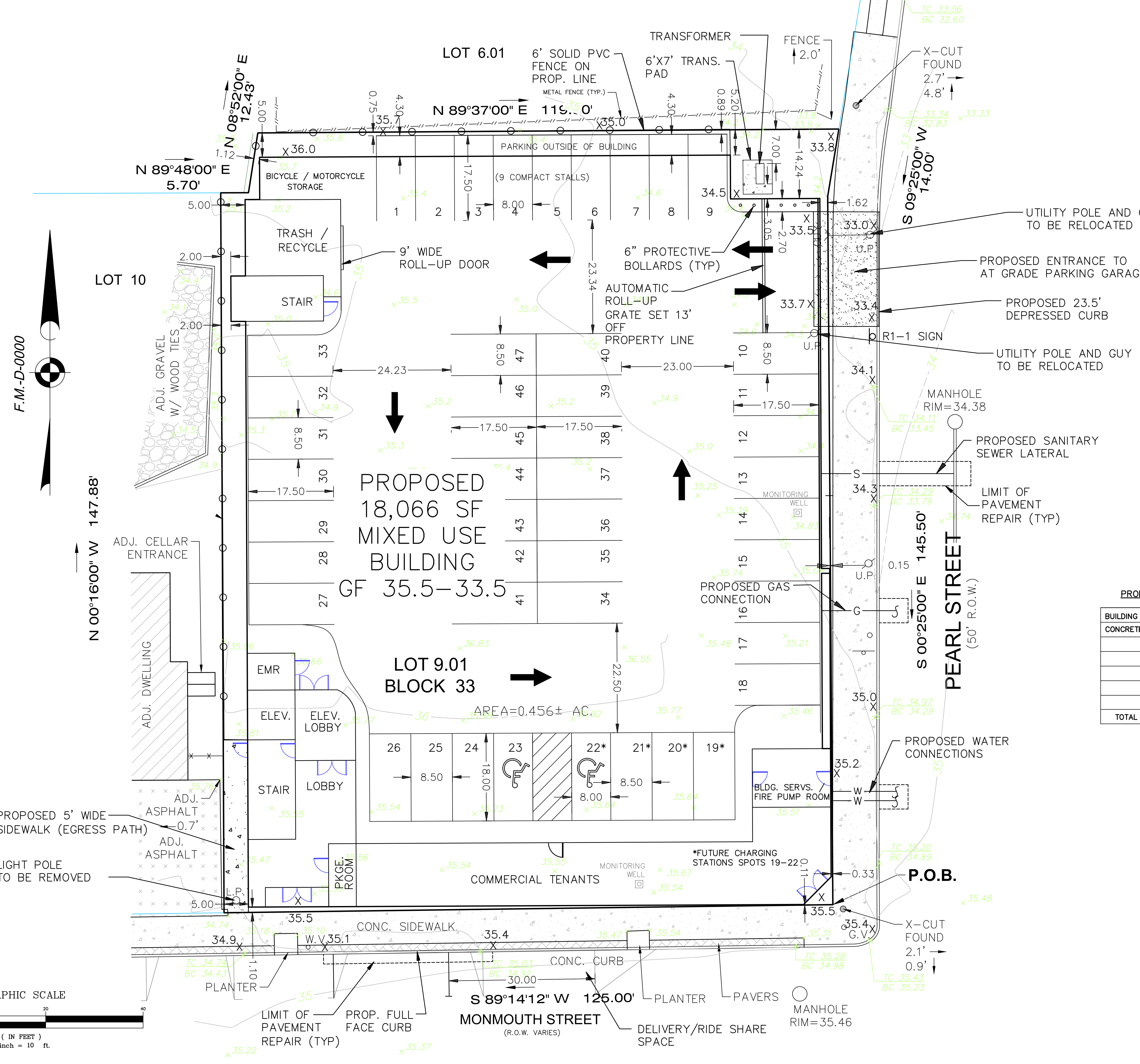


COPYRIGHT © 2020, TWO RIVER ENGINEERING - ALL RIGHTS RESERVED. THE CONTENTS OF THIS DRAWING ARE THE PROPERTY OF TWO RIVER ENGINEERING AND ARE NOT TO BE REPRODUCED OR TRANSMITTED IN ANY FORM OR BY ANY MEANS, ELECTRONIC OR MECHANICAL, INCLUDING PHOTOCOPYING, RECORDING, OR BY ANY INFORMATION STORAGE AND RETRIEVAL SYSTEM.



- NOTES:
1. ALL EXISTING CURB AND SIDEWALK TO BE REPAIRED AND REPLACED AS DIRECTED BY THE BOROUGH ENGINEER. SEE SHEET 8 OF 8 FOR DETAILS.
 2. ALL WATER AND SEWER IMPROVEMENTS SHALL BE COORDINATED WITH THE BOROUGH DPW.
 3. APPLICANT SHALL BE RESPONSIBLE TO MILL AND OVERLAY THE PAVEMENT FROM CURB TO CURB ALONG THE FRONTAGE ON PEARL STREET WITH 2" OF 9.5M64 SURFACE COURSE PAVEMENT.
 4. ALL PROPOSED DISTURBANCE WITHIN ROADWAY TO BE APPROVED BY BOROUGH COUNCIL.
 5. BOROUGH TO REVIEW UTILITY POLE RELOCATION TO CONFIRM THERE ARE NO CONFLICTS WITH BOROUGH UTILITIES.
 6. ALL SIDEWALK AND CURB REPLACEMENT SHALL BE IN COMPLIANCE WITH ADA/PROWAG REQUIREMENTS.

PROPOSED LOT COVERAGE CALCULATION

BUILDING	18080 SF
CONCRETE PAD	42 SF
TOTAL	18122 SF (91.2%)

3	08-05-21	REVISED ROLL-UP DOOR LOCATION.
2	04-08-2021	REVISED PER ENGINEERS LETTER DATED 2-4-21.
1	10-1-2020	REVISED FOR COMPLETENESS
REV.	DATE	DESCRIPTION

TWO RIVER ENGINEERING

 www.tworivereng.com

P.O. Box 155 Tel: 732.866.0111

 Colts Neck, N.J. 07722 Fax: 732.866.4348

PROJECT NO.: 19079

 DATE: APRIL 8, 2020

 DRAWING NO.: 19079-01

 CLIENT: PARK VALLEY

 SCALE: 1"=10'

SITE IMPROVEMENT PLAN

"PARK VALLEY DEVELOPMENT"

PRELIMINARY & FINAL

MAJOR SITE PLAN

 OF

BLOCK 33

LOT 9.01

 TAX MAP SHEET NO. 2

 BOROUGH OF RED BANK

 MONMOUTH COUNTY

 NEW JERSEY

A.J. GARITO, JR.

 DATE: 08-05-21

 N.J. Professional Engineer

 License No. 24GE03799700

