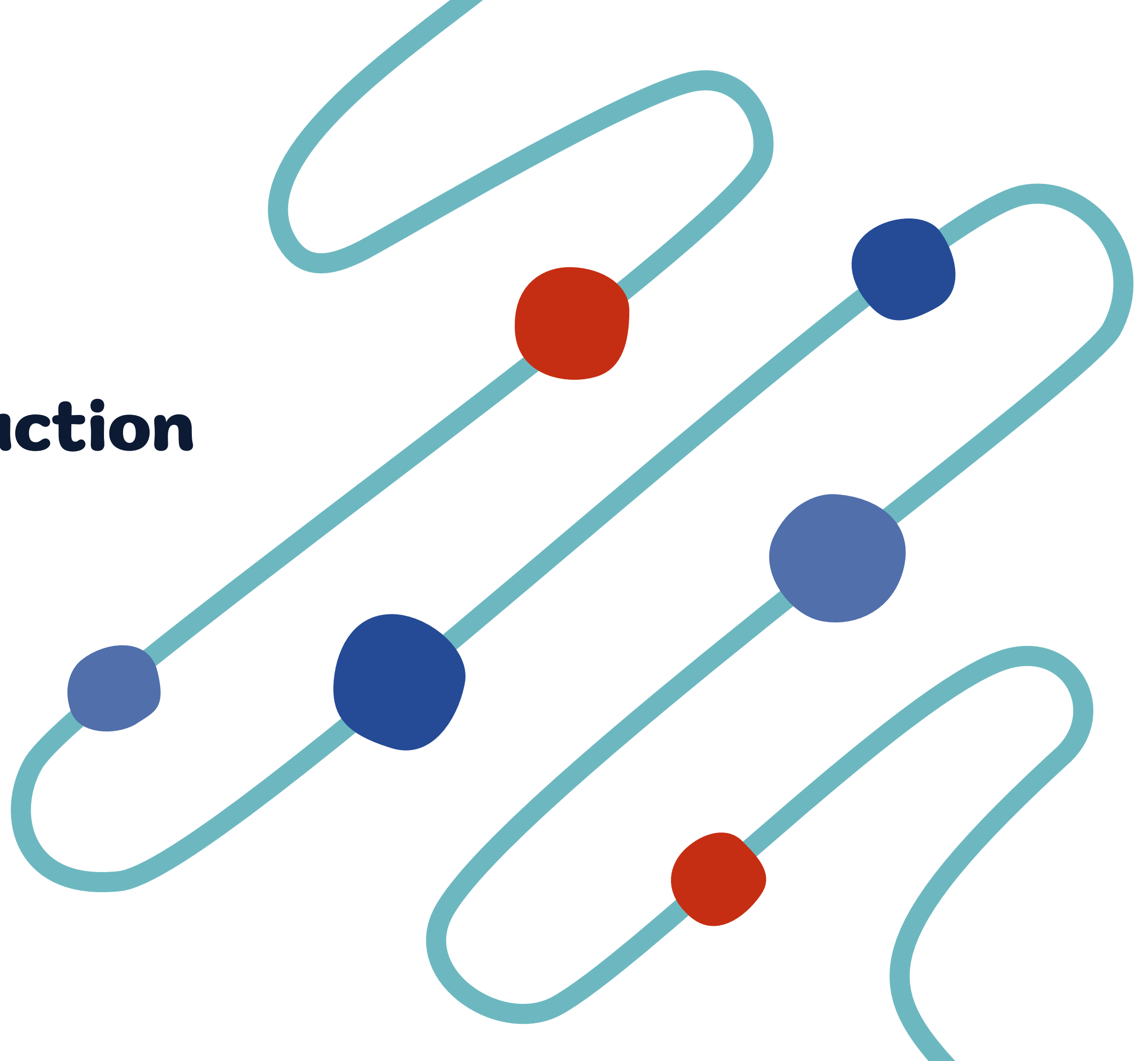




Marine Park Playground

RED BANK, NJ • DESIGN CONCEPT • OCT 2024

Project introduction



Your team



John Marshall
Direct Sales Representative



Juliette Lemnij
Architectural Designer



Oceane Perez
3D Artist



Project goals

Iconic, destination playground

Serves all ages in the community

Thrilling experiences (tall towers, fun slides, exciting swings and ziplines)

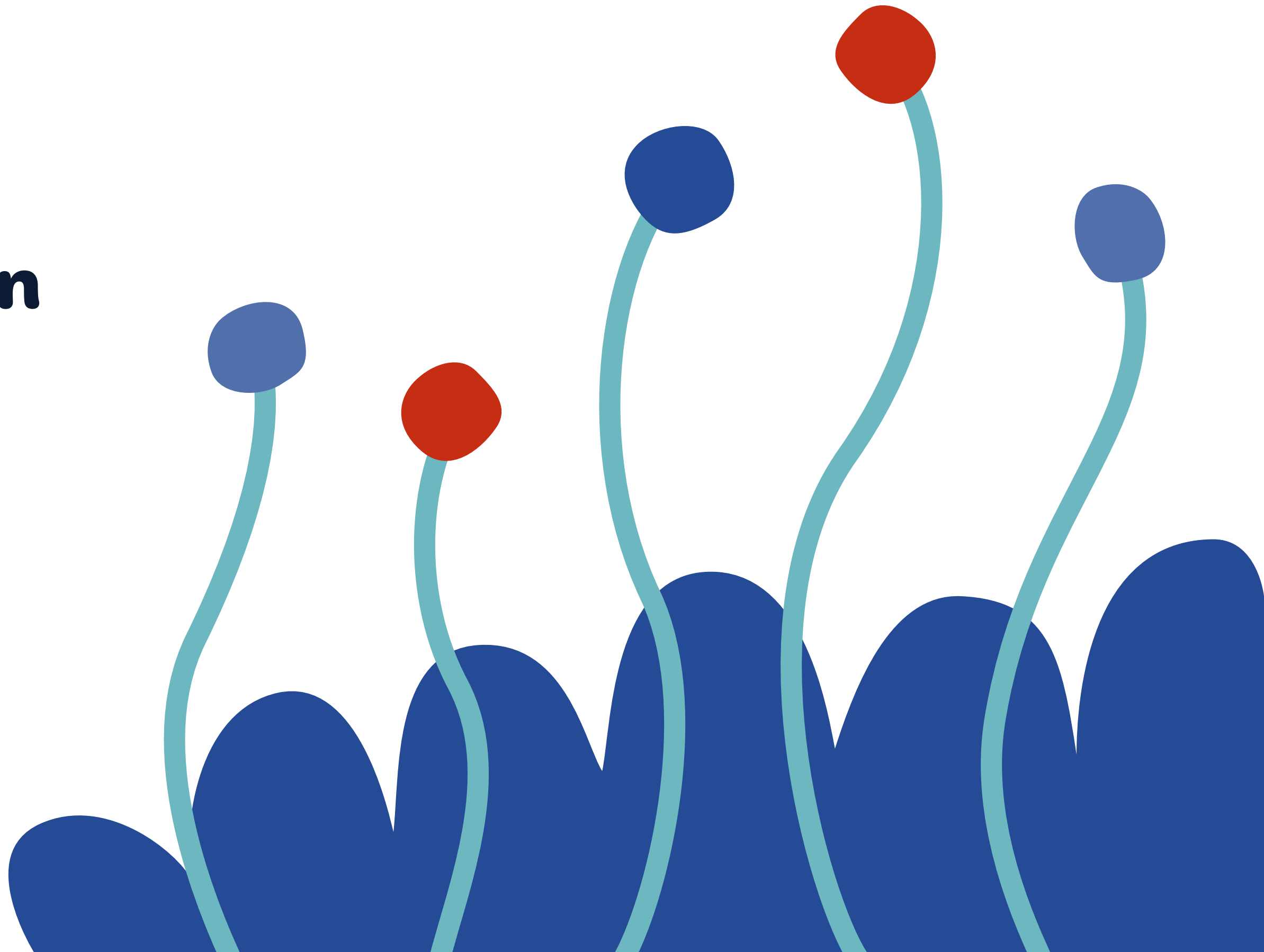
Embankment play that enhances and takes advantage of the natural topography of the site

Focus on inclusion and accessibility- Play For All

Inspiration



**Design
solution**



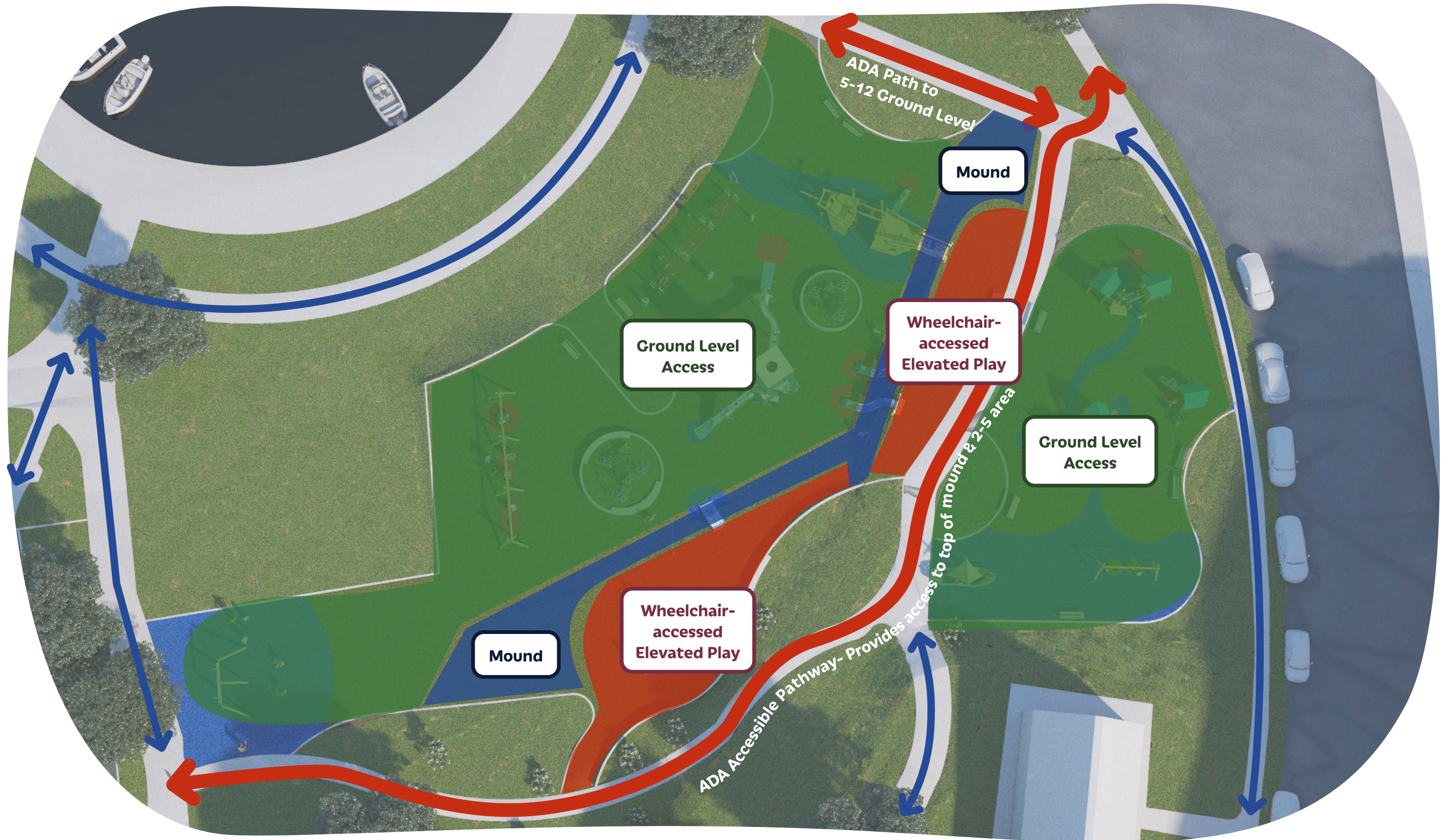




Site plan







Circulation



- 1** Zipline
- 2** Swings
- 3** Double Hill Climber Rope
- 4** 3' Embankment Slide
- 5** Custom Quad Cube Tower
- 6** Tunnel Bridge
- 7** Custom Pirate Ship
- 8** Hill Climber Rope
- 9** 6' Embankment Slide (2)
- 10** Climbing Cleats
- 11** Little Beaver Stream
- 12** Little Turtle's Town
- 13** Theater and Music Cottage
- 14** Oasis Boat with Sail
- 15** Infant Swings

Equipment List



Age groups

KOMPAN®



2-5

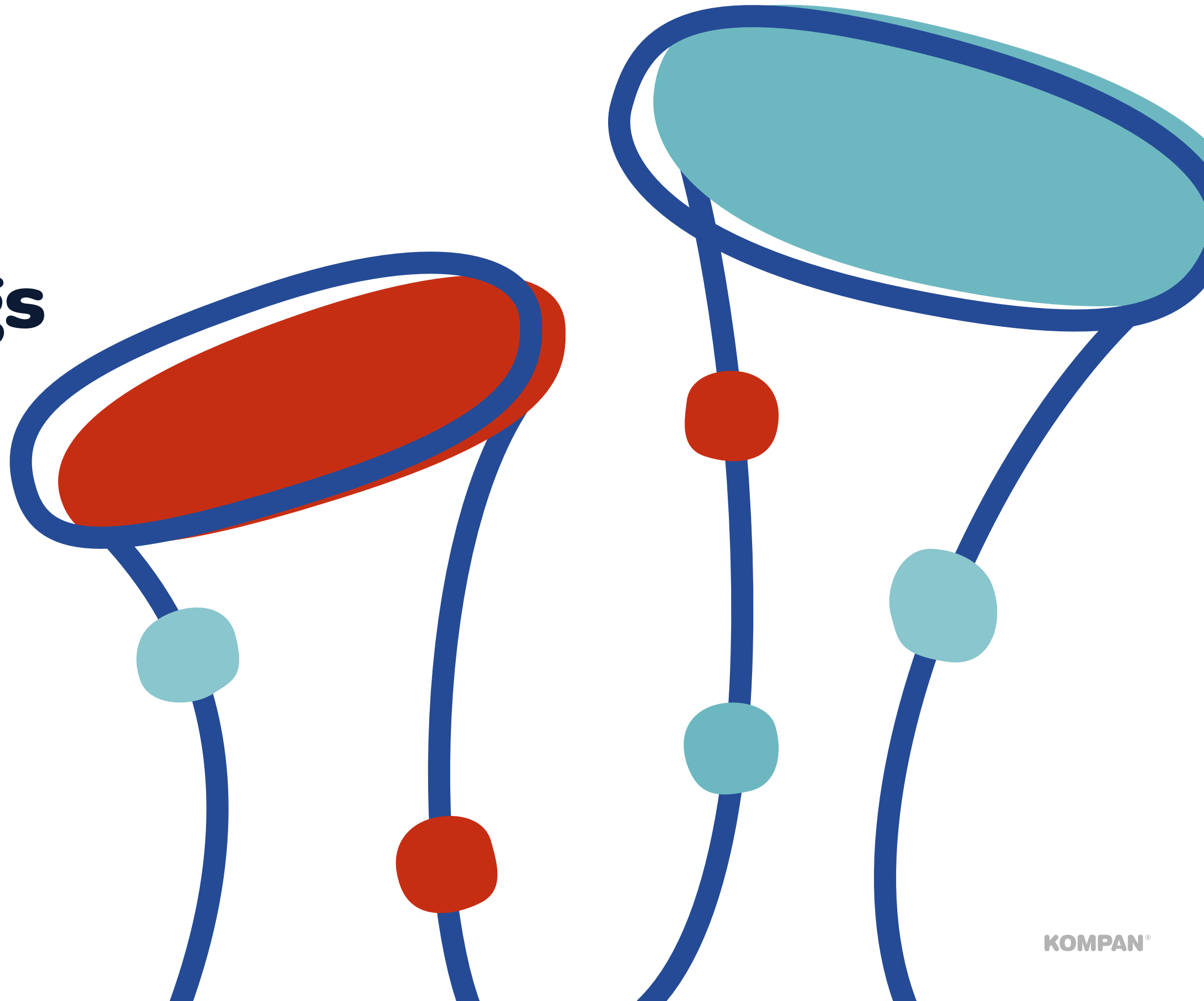


5-12



Age Groups

Site Renderings









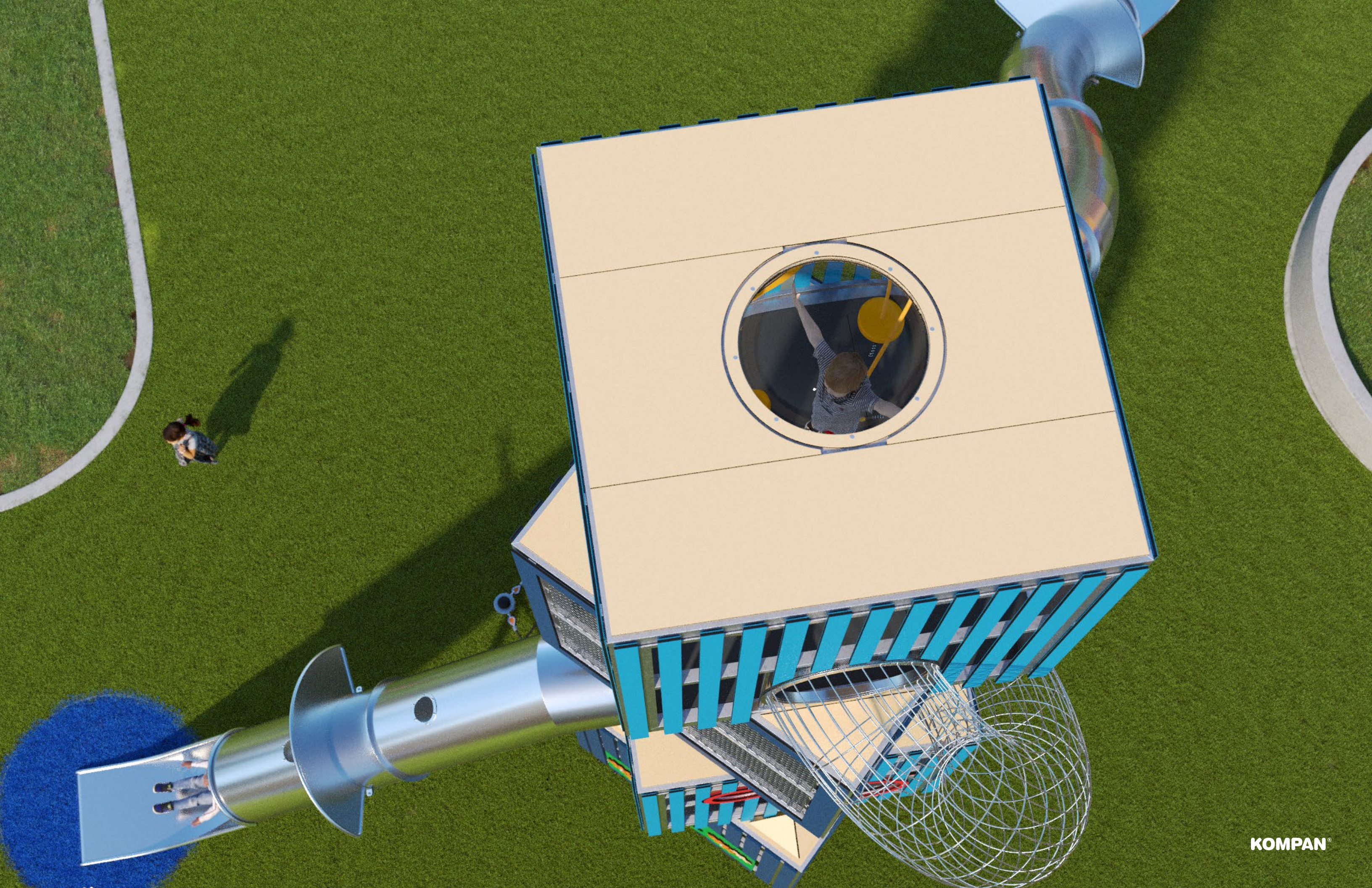
KOMPAN!





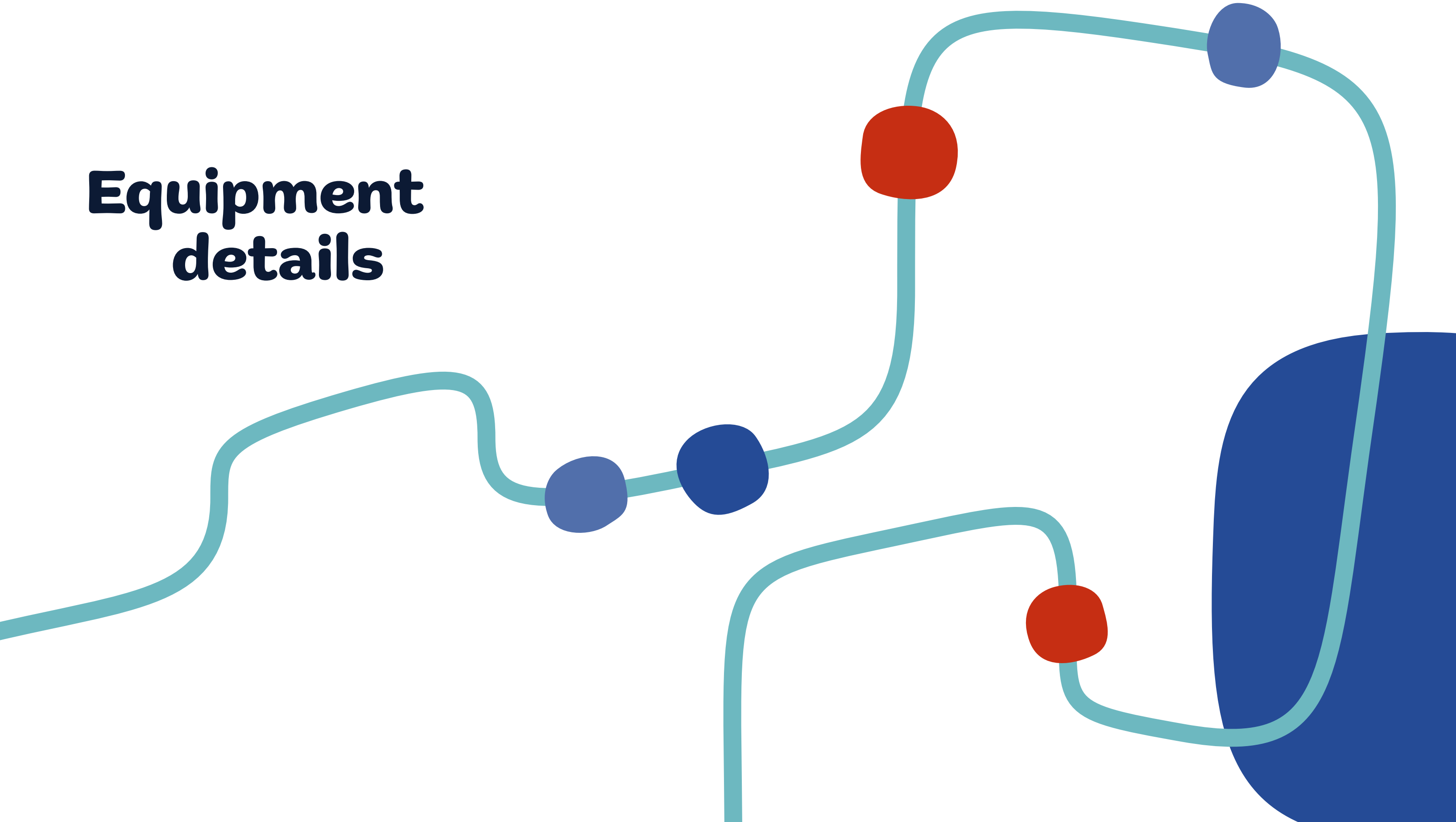








**Equipment
details**





2-5 Play Area



Little Beaver Stream

NRO2013-xx21



Theater & Music Cottage

NRO4001-xx21



Little Turtle's Town

NRO4001-xx21

2-5 equipment



Little Beaver Stream



The inside and outside of the Theater & Music Cottage are packed with play. The drums and xylophone allow children to explore their musical side, while inside activities like the clock and bell panel, mirror, and desk with holes and membrane flaps provide diverse cognitive and creative stimulation.

Theater & Music Cottage





The Little Turtle Town packs in physical, social, cognitive, and creative play opportunities perfectly scaled for the youngest playground visitors. From development of gross and fine motor skill to learning turn-taking and empathy, this play piece is packed with age-appropriate challenges for all.



Little Turtle's Town



Oasis Boat with Sail
NRO529-xx21



Infant Swings
NRO931647

2-5 equipment



Themed play equipment supports dramatic play and stimulates language and communication skills. From the binoculars to the steering wheel to the benches, children can be entertained for hours in this boat.

Oasis Boat with Sail





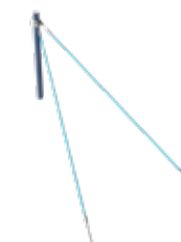
5-12 Play Area



Three-Bay Swings
NRO926-CUSTOM_20315993



3' Embankment Slide
KSL30102



Double Hill Climber Rope
CRP630201-CUSTOM_20318104



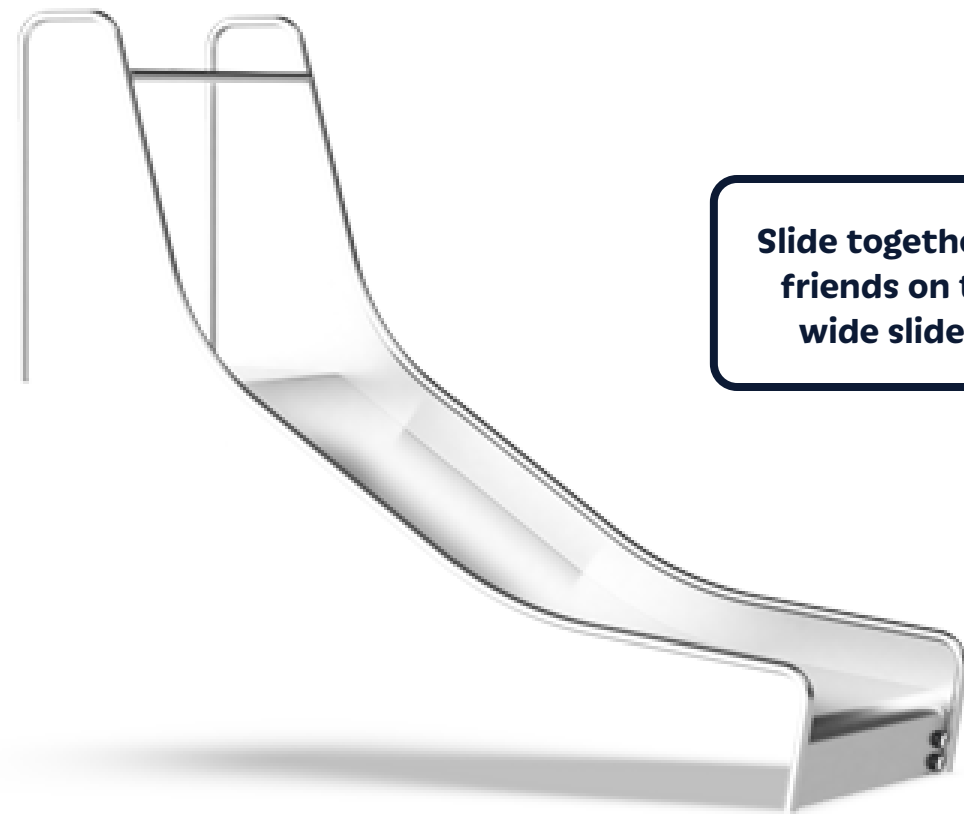
Zipline (Sloped Space)
NRO881-xx01

5-12 equipment

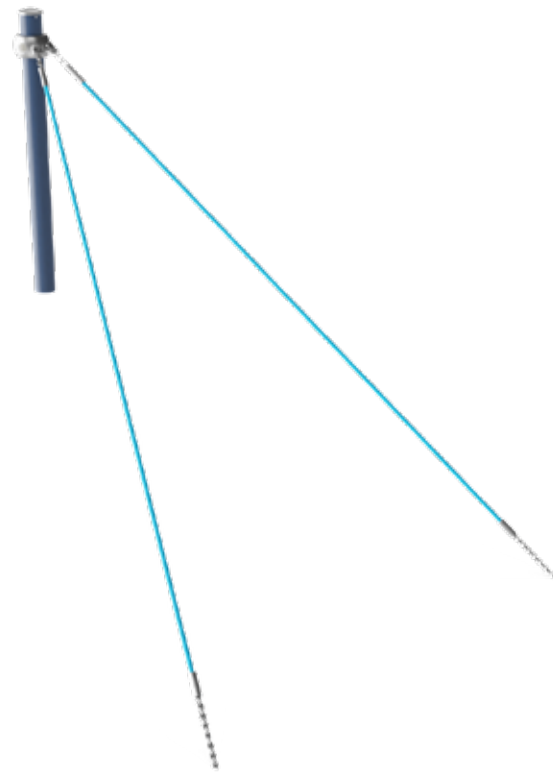


Three-Bay Swings

A combination of standard belt seats, ADA-friendly seats, and a multi-user basket swing provides ample diverse play opportunities for playground users of all ages and abilities.



Slide together with friends on the 3' wide slide bed



Race back up the mound like a mountaineer



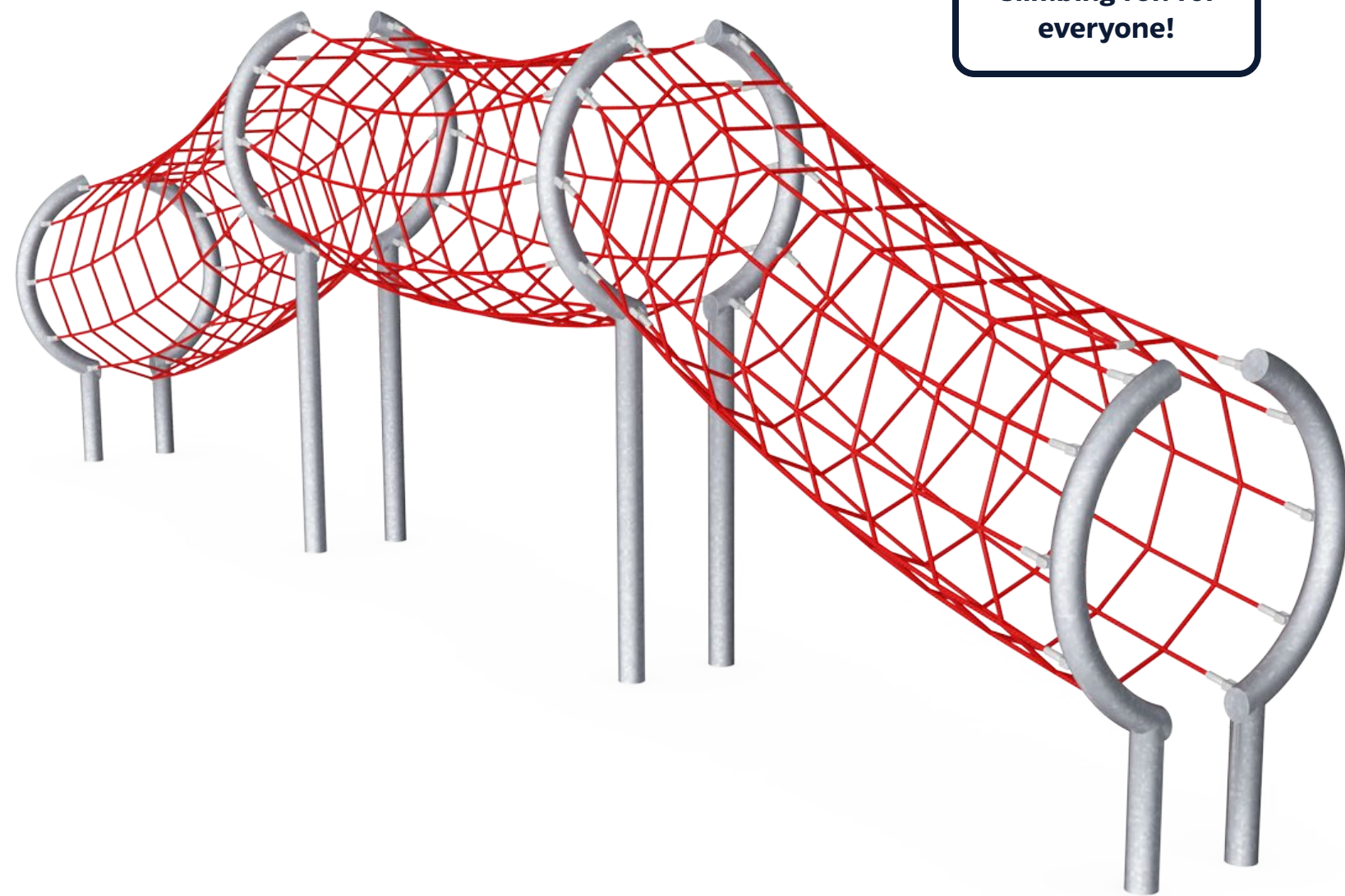
Embankment Play (3' hill)



The zipline is an exciting thrill for older playground visitors. Its position on the site keeps thru-traffic away and allows children to race to their heart's content!



Zipline (Sloped Space)



Climbing fun for
everyone!



Tunnel Bridge

KOMPAN®



Embankment play (5' hill)



Custom Pirate Ship
NRO900054



Custom Quad Cube Tower
COR883078

5-12 equipment

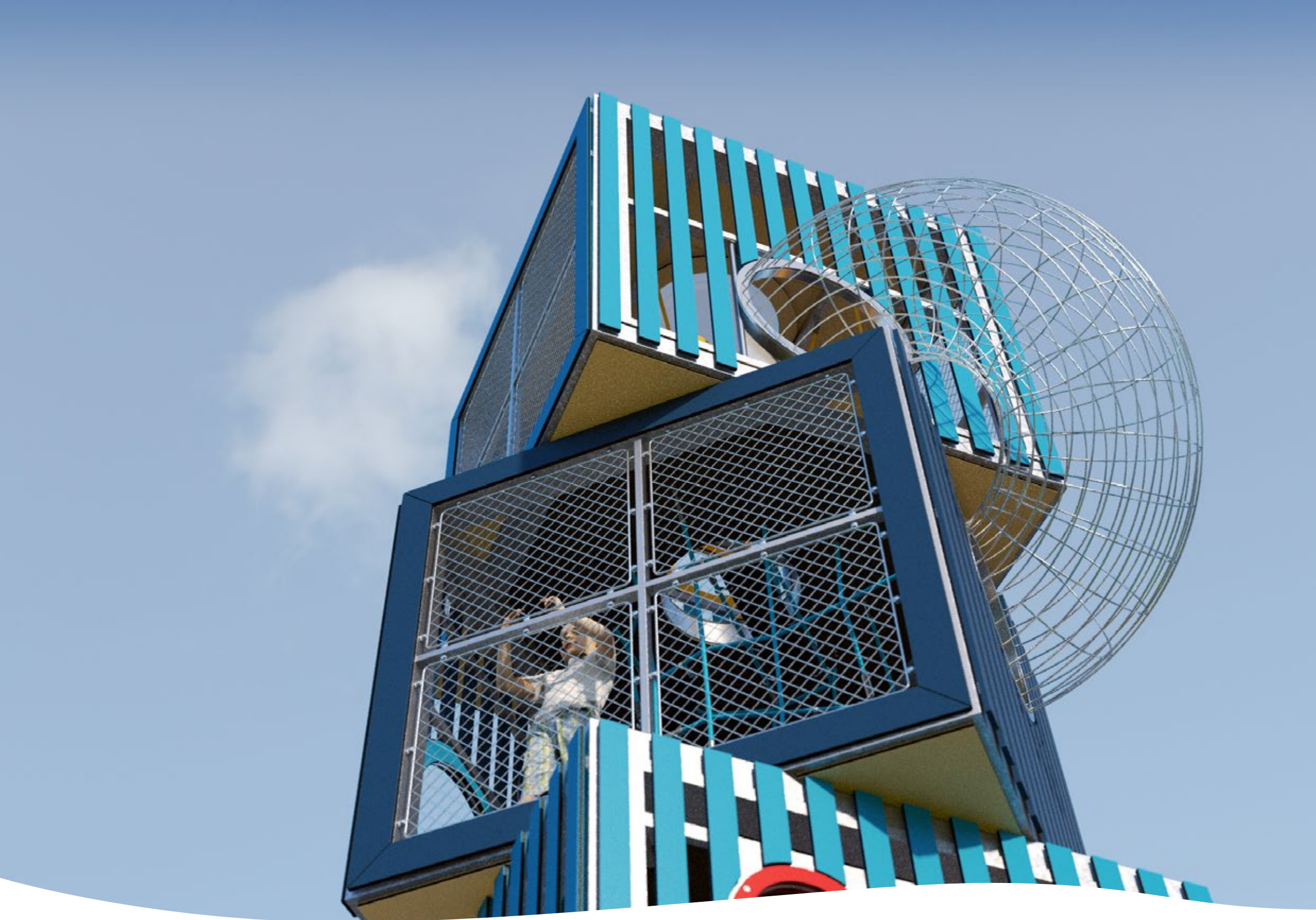


Users of all abilities can enjoy the pirate ship thanks to the accessible bridge at the stern!

Custom Pirate Ship



KOMPAN®

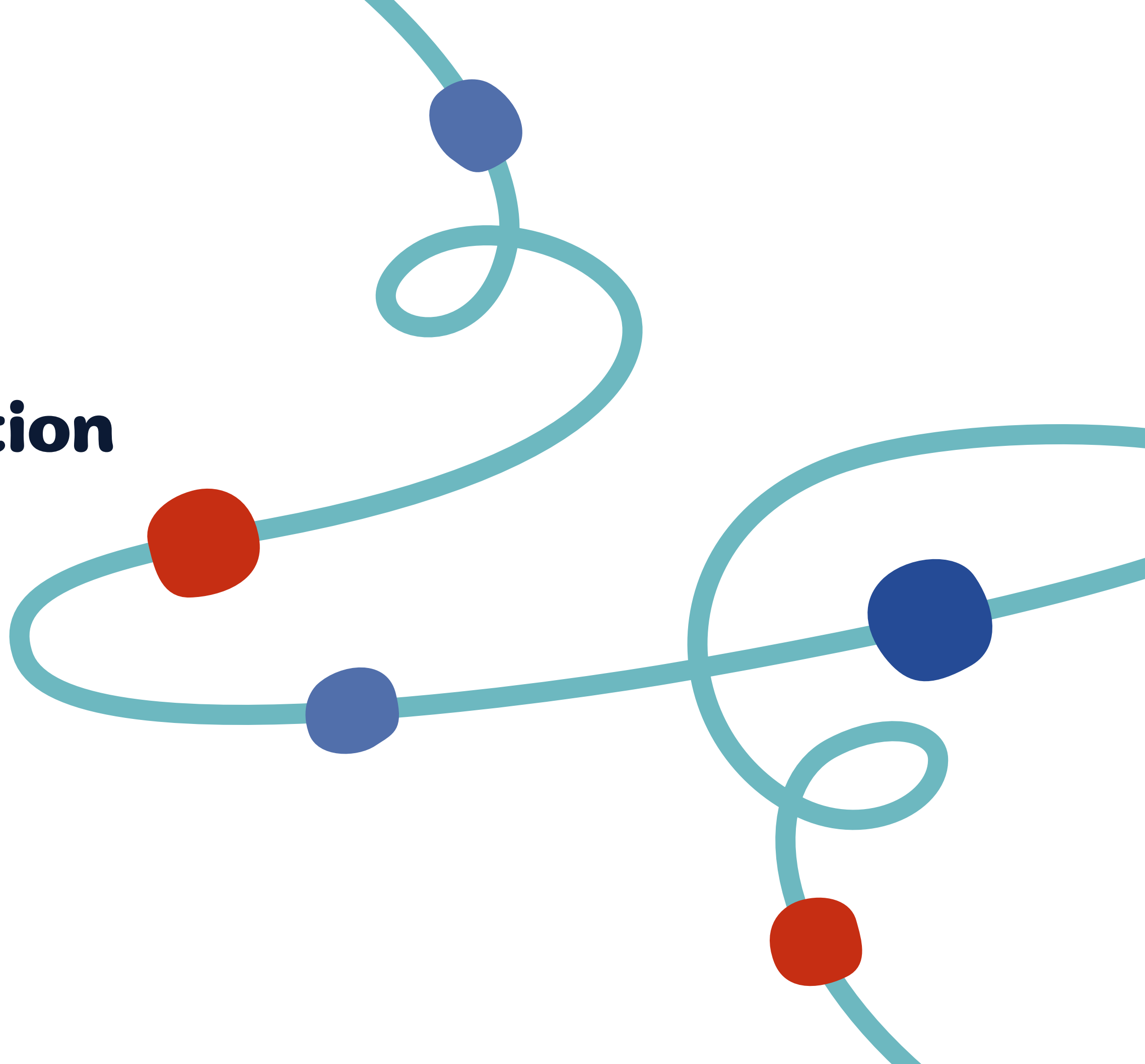


Standing at 30 feet tall, the Quad Cube is fully enclosed above the first level to safely provide a thrilling bird's eye perspective over the playground. The gem of the site, the tower stands tall and proud, highly visible to everyone around!

Custom Quad Cube Tower



**Additional
information**



Play the KOMPAN Way



Creating healthier and happier communities for over 50 years

KOMPAN's journey started in 1970, when young artist Tom Lindhardt founded the company. Working closely with child experts, he set out to ignite children's instinct to play, and in doing so, he invented a completely new way of rocking with the iconic Springer.

Since then KOMPAN has launched numerous inventions that have set new global standards for ways to play, always seeking to create the world's best playground and sport & fitness solutions.



Wow, Stay, Develop

These three little words reflect our approach to sparking the human instinct to play. Our unique philosophy of product development is based on thorough research, extensive user involvement, and close collaborations with experts through the KOMPAN Play & Fitness Institute. This creates solutions that motivate people of all ages and abilities to play more, learn more, and be more physically active while always having fun.

The Wow Factor

When you see a KOMPAN site, your **imagination and excitement** ignite and drive your instinct to play. You can't wait to start playing or exercising with our inventions!

The Stay Factor

Once you start playing or exercising, we seek to make you stay. Age-appropriate solutions **continuously stimulate** new ways of playing with the right dose of challenge that is key to having fun and being physically active.

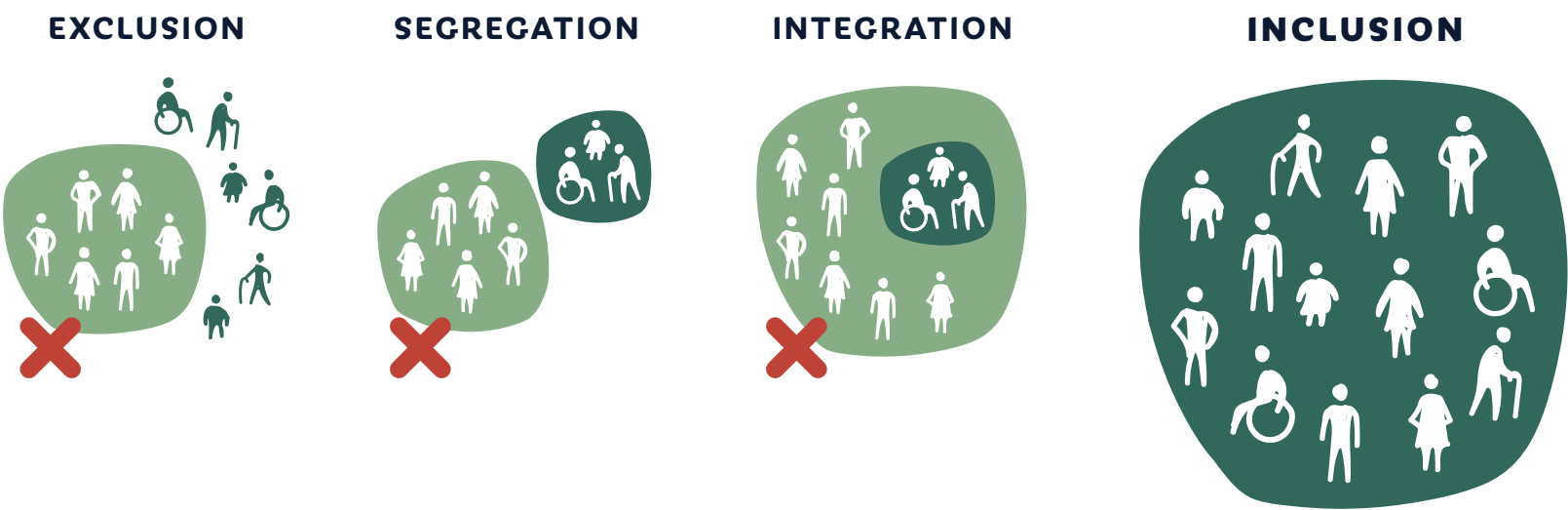
The Develop Factor

When engrossed in play we **learn and move with intensity**—often not sensing our own intellectual and physical development. KOMPAN solutions develop physical skills such as motor skills, balance, and coordination, as well as intellectual skills such as language development and cause-and-effect principles.



The belief in inclusive play runs deep at KOMPAN

“Play Together”—the idea that everyone should be included in play—is a foundational pillar in our philosophy. KOMPAN has more than 40 years of experience from designing play solutions for all, including children with disabilities. You will find universal design everywhere in our playgrounds, not least in the many openings and details that encourage play exchanges between children inside and outside the play elements.



6 Principles for Universal, Inclusive Design



Accessible



Multi-functional



360° design
(play from all sides)



Diverse play
opportunities



Clear in color and
design signals



Special solutions for
special needs

KOMPAN Play Institute



Suzanne Quinn, PhD
Manager of KPI, Americas

Suzanne is a member of the National Association for the Education of Young Children (NAEYC), the Society for Research in Child Development (SRCD), and the editorial board of Early Childhood Research Quarterly (ECRQ). She was co-editor of the 2018 Routledge Handbook of International Perspectives on Early Childhood Education with J.L. Roopnarine, J. E. Johnson and M. Patte.



Play specialists dedicated to developing, documenting, and researching playgrounds

The main work areas of the KOMPAN Play Institute are:

- Research in playground and child development
- Testing and documentation of play designs with children of all abilities
- White papers, publications, and research on playground specific topics, see: kompan.com/en/us/research/kompan-play-institute
- Consultancy and advocacy on playgrounds and city planning for play

Child development



Cognitive

Joy of learning: curiosity, understanding of causal relationships and knowledge of the world



Social-Emotional

Joy of being together: teamwork, tolerance and sense of belonging



Physical

Joy of movement: motor skills, muscle, cardio and bone density



Creative

Joy of creating: co-creation and experimenting with materials

Play and growth are intertwined

Play is one of seven emotional systems of the human brain and is on par with other human emotional instincts such as happiness, fear, or love. Children's physical, social-emotional, cognitive, and creative development is not only supported by play, it is developed through play.

Playground play and child development has roots in physical play, in fun rough-and-tumble play. But play motivation and great playgrounds also build on pretend play, dramatic play, explorative sand water play, and many more.

Different age groups also have specific play preferences and needs. The KOMPAN Play Institute recognizes age-appropriateness in the design of individual equipment and its placement.

Inclusive Outdoor Fitness



Creating training spaces that are useful and welcoming to everybody

The KOMPAN Fitness product range is created with inclusion in mind. This is achieved by reducing barriers and including a variety of exercise opportunities that together support the widest extent of users.

Inclusive fitness provides the opportunity for people with disabilities to participate in fitness exercise alongside their peers as equals. Most items can be used generally across abilities, while other items are designed for specific user groups such as wheelchair users, people with poor eyesight, or seniors. An inclusive outdoor fitness site based on KOMPAN insights and principles will have useful exercise activities for everyone regardless of ability level.

Materials built to last



Play Panels

The 19mm EcoCore™ panels are a highly durable, eco-friendly material, which is not only recyclable after use, but also are made from >95% post-consumer recycled waste.

The new dark teal EcoCore™ panels used in KOMPAN GreenLine products are made of >95% recycled post-consumer ocean waste.



Decks

All decks are supported by uniquely designed low-carbon aluminum profiles with multiple attachment options. The gray-colored molded decks are made of 75% post-consumer PP material with a non-skid pattern and texture surface.



Hercules Rope

Ropes come with galvanized six-stranded steel wires and a steel core, impossible to wear through. Each strand is tightly wrapped with PES yarn in >95% post-consumer recycled material, which is melted onto each individual strand, making the ropes highly wear and vandalism-resistant.



Posts

Main posts are available in four different materials:

1. Impregnated pine wood with in-ground steel footing.
2. Galvanized steel with powder-coated top finish.
3. Color-anodized lead-free aluminum, made from low-carbon aluminum.
4. TexMade™ posts made from >95% post-consumer recycled textile and plastic waste.



Galvanized Steel

Our steel surfaces and steel frames consist of a hot-dip galvanized inside and outside with lead-free zinc according to global safety standards for playground equipment. The galvanization has excellent corrosion resistance in outside environments and is maintenance free.



Robinia Wood

Robinia wood is a very strong and long-lasting material with very high levels of natural oils. Thus Robinia wood makes durable playgrounds almost maintenance free and able to last for many years.

Industry-leading warranties



LIFETIME* warranty

- Hot-Dip galvanized parts
- Stainless steel parts
- EcoCore™ and other high-density polyethylene (HDPE) parts

* KOMPAN's LIFETIME warranty is in effect for the lifetime of the product until the product is uninstalled and/or taken out of use. In addition, KOMPAN's general terms and delivery conditions apply and supplement this warranty.



15-year warranty

- High-pressure laminate (HPL) parts
- Aluminum parts



10-year warranty

- TexMade™ posts
- Pre-galvanized posts with painted top layer
- Painted surface on galvanized or aluminum metal parts
- Stainless Steel Slides
- Electrogalvanized metal parts
- Molded PP decks
- Solid plastic parts
- Hollow plastic parts
- Transparent Poly Carbonate (PC) parts
- Rope and net constructions
- Wood-plastic composite (WPC) parts
- Robinia, ash, pine, and other wood types



5-year warranty

- Resin coated plywood parts
- Springs and ball bearing assemblies
- Graphic print on transparent PC panels
- Concrete parts
- Galaxy Connection Balls



2-year warranty

- Movable plastic & metal parts
- Rubber membranes
- Screens and electronic parts
- Sunshades & sail solutions
- Nylon nets
- Spare parts

For a greener future

Using **EcoCore™ HDPE GreenLine panels** in ocean green—made from >95% post-consumer ocean recycled waste—reduces carbon emissions by 82% CO² e/kg compared to panels from post-industrial waste.



-82%
CO² e/kg



-74%
CO² e/kg

Using **TexMade™ posts**—made from >95% post-consumer recycled textile and plastic waste—reduces carbon emissions by 74% CO²e/kg compared to steel posts.

Using **low-carbon aluminum** profiles produced with renewable energy sources reduces carbon emissions by 56% CO² e/kg compared to aluminum made with traditional energy sources.



-56%
CO² e/kg

Using natural materials, such as **robinia and pine wood** from sustainable forestry practices, results in sustainable and highly durable playgrounds.



-68%
CO² e/kg

Using **BLOQX™ GreenLine panels**—made from 75% post-consumer ocean recycled waste—reduces carbon emissions by 68% CO² e/kg compared to standard BLOQX™ panels.

The biggest impact on CO² emissions is through raw materials

For a company like KOMPAN, more than 80% of carbon emissions comes from raw materials. Therefore we focus on two things that most effectively help lower CO² emissions:

Made Green

Push the development of our own raw materials to increasingly post-consumer recycled waste instead of using virgin materials.

Born Green

Use sustainable raw materials that are naturally green, such as robinia wood that is highly durable and does not require chemical preservatives.

**Let's
play!**