

ENVIRONMENTAL IMPACT ASSESSMENT

Prepared to address the

GREEN ACRES PROGRAM PARK DEVELOPMENT FUNDING APPLICATION

For the

JOHNNY JAZZ PARK IMPROVEMENTS

Block: 79, Lot: 23
Red Bank Borough
Monmouth County, New Jersey

For

The Borough of Red Bank
90 Monmouth Street
Red Bank, NJ 07701

Prepared by:



CME Associates
1 Tower Center Blvd., 20th Floor, East Brunswick, NJ 08816
P: (732) 951-2101 F: (732) 951 2106



Austin Bazuk, Associate Project Manager

January 2026
Our File: 115.RB00003.H25

| TABLE OF CONTENTS | PAGE |
|--|-------------|
| DESCRIPTION OF THE PROPOSED PROJECT | 1 |
| DESCRIPTION OF THE ENVIRONMENT | 2 |
| ENVIRONMENTAL IMPACT ANALYSIS OF PROPOSED ACTION | 4 |
| ALTERNATIVES TO THE PROPOSED ACTION | 6 |
| MITIGATING MEASURES | 7 |
| AUTHOR(S) AND QUALIFICATIONS | 8 |
| REFERENCES | 9 |

APPENDICES

APPENDIX A: Map Graphics

APPENDIX B: Site Photographs

APPENDIX C: Natural Heritage Program Database Letter

APPENDIX D: Authors and Qualifications



DESCRIPTION OF THE PROPOSED PROJECT

a. Brief description of the project

The Borough of Red Bank is proposing improvements to Johnny Jazz Park located at the intersection of Shrewsbury Avenue and Drs James Parker Boulevard in Red Bank Borough, Monmouth County, New Jersey. The proposed project aims to enhance the park's amenities for the enjoyment of the local community. Proposed improvements include:

- Construction of an 18" high concrete stage platform with decorative paver block steps, electrical connection for sound, lighting, and performers, and a spotlight
- Construction of a 6' wide concrete ADA walk/ramp along the northern side of the park and around the stage platform
- Construction of open lawn space
- Construction of a stone dust/crushed gravel walkway/patio along the eastern and western portions of the park
- Installation of outdoor musical instruments, 4' wide decorative game tables, trash receptacles, and a Portland Loo bathroom
- Other general landscape improvements

These improvements will benefit the surrounding community and park visitors by providing a modernized and accessible space for community events and recreational activities.

b. Objectives of the project

The objective of the project is to improve the park and its amenities, improving the recreational opportunities and community events for the community. The proposed park improvements will offer accessible features including ADA compliant ramps and walkways while preserving existing vegetation on site.

c. Multi-phase projects

This project is not anticipated to be a multi-phase project.



DESCRIPTION OF THE ENVIRONMENT

a. Vegetation

The project site mainly consists of maintained lawn with some tree cover and shrubbery. A concrete walkway currently exists on site that bisects the site. A total of 4 mature trees, are present within Johnny Jazz Park. Tree plantings, shrubbery, and herbaceous vegetation are planted along the perimeter of the park.

b. Wildlife

Based on the NJDEP's Natural Heritage Database search results, there is documented foraging habitat for the Black-crowned Night-heron within one mile of the site (refer to *Appendix A: Natural Heritage Database Results*). The project will have no effect on this species because the species is not critically dependent on the area for survival. This work will not destroy, jeopardize, or adversely affect a present or documented habitat for threatened and endangered species and will not jeopardize the continued existence of any local populations.

Due to the developed nature of the site and regular human activity, wildlife habitat quality is low and primarily limited to small patches of ornamental vegetation, lawn areas, and scattered shade trees. These features support common urban and suburban wildlife species typically adapted to disturbed environments. Wildlife species expected to occur in the area include small mammals (e.g., eastern gray squirrel, raccoon, eastern cottontail), common songbirds (e.g., American robin, northern cardinal, house sparrow), and various urban-tolerant species such as mourning doves, starlings, and crows. No specialized habitat features such as wetlands, riparian corridors, or large forested blocks occur within the project footprint. Due to the intensively maintained character of the site, habitat for sensitive, rare, or migratory wildlife is limited.

c. Geology, Topography, and Soils

The project site is located on the Shrewsbury Member with a surficial geology of Cape May Formation, Unit 1. The lithology of the Shrewsbury Member consists of quartz sand, fine- to coarse-grained. The lithology of Cape May Formation, Unit 1 consists of sand, minor silt, clay and pebble gravel. This layer is typically very pale brown, yellow, and reddish yellow and can be up to 50 feet thick.

Existing topographic elevations are around 47 feet throughout the site.



The USDA Websoil Survey online resource shows the proposed work area to be within an area overlain by Urban land (UR) and Freehold-Urban Land Complex (FrrC).

Urban land – Surface covered by pavement, concrete, buildings and other structures underlain by disturbed and natural soil material. Unranked hydric soil rating.

Freehold-Urban Land Complex – 0 to 10 percent slopes and no hydric soil rating. A typical profile consists of 0 to 14 inches of sandy loam, 14 to 21 inches of sandy clay loam, 21 to 35 inches of sandy loam, and 35 to 80 inches of loamy sand.

d. Water Resources/Hydrology

There are no water bodies within the immediate vicinity of Johnny Jazz Park. The nearest waterway, the Swimming River, is located approximately 1,500 FT (0.3 miles) west of the project site and is classified as an SE1 waterway according to the NJDEP (according to the rules found within the Surface Water Quality standards found at N.J.A.C. 7:9B).

The project site is located within the Monmouth Watershed Management Area, the Navesink River / Lower Shrewsbury River Watershed, and the Poricy Bk / Swimming R (below Swimming R Rd) Sub-watershed.

There are no freshwater wetlands located on site.

e. Historic/Archaeological Resources

According to the NJDEP's GeoWeb Online GIS Resource, Johnny Jazz Park is not within any archaeological site grids, historic districts, or historic properties.

f. Transportation/Access to Site

Johnny Jazz Park is located at the intersection of Shrewsbury Avenue and Drs. James Parker Boulevard. Parking for Johnny Jazz Park consists of street parking along Drs. James Parker Boulevard and Shrewsbury Avenue.

g. Adjacent land uses/Description of the surrounding neighborhood

The project area and immediate vicinity is composed entirely of commercial/services land use. The surrounding area is composed of residential, high density or multiple dwelling.



ENVIRONMENTAL IMPACT ANALYSIS OF PROPOSED ACTION

a. Discussion on all affected resources and the significance of each impact

The proposed project will not include the removal of any trees for the construction of the improvements. All four (4) mature trees onsite as well as the existing row of evergreens along the western perimeter of the site will remain. The project proposes general landscaping improvements including shrubbery and herbaceous vegetation throughout the park.

The proposed improvements are not located within riparian zones, flood hazard areas, or wetlands.

The proposed activity does not meet the definition of a “major development” as there will be less than 1 acre of land disturbance and less than ¼ acre of new impervious surface.

b. Discussion on short-term and long-term project impacts

Any short-term impacts resulting from the proposed project will be those occurring during the construction of the improvements. These include any changes in access to the park, any increases in ambient noise and minor increases in construction related traffic and onsite staging of materials and equipment, temporary disturbance of previously developed areas, and any visual impacts associated with construction materials and activities. Access to the park will be impacted temporarily during construction and will be restored upon project completion. All appropriate measures will be taken to control soil erosion during construction.

Long-term impacts will include improved recreational opportunities, community access/use, and accessibility within Johnny Jazz Park, including a designated stage for performances, increased lawn space, an ADA-compliant walkway and ramps, and increased seating. The proposed improvements at Johnny Jazz Park will not negatively affect water quality. A portion of the proposed impervious surface resulting from the improvements will be offset through the replacement of the existing concrete walking path with lawn. Overall, the proposed improvements will encourage increased recreational use of the park by offering an enhanced stage and viewing area for performances within the park as well as outdoor musical instruments and game tables. Environmental impacts will be minimized as much as possible and disturbed areas will be reseeded with native vegetation upon construction completion.



c. Discussion on anticipated increase in recreation and overall use of the site over time

The goal of the project improvements is to enhance recreational opportunities and community events within Johnny Jazz Park. Therefore, it is anticipated that recreational usage and overall use of the site will increase over time through the creation of seating areas, open space, and accessible walkways and ramps.

d. Adjacent environmental features that may be affected by the proposed project

No adjacent environmental features will be impacted as a result of the improvements to Johnny Jazz Park. No regulated areas including riparian zones, flood hazard areas, or wetlands are located on site or within the vicinity of the site. Site improvements will take place within previously disturbed and maintained land. Environmental impacts will be minimized to the greatest extent possible, and all disturbed areas will be reseeded upon completion.

e. List of any permits and administrative approvals required for the project

No permits will need to be obtained from the NJDEP for the Johnny Jazz Park improvements as no work will take place within any regulated areas. Other required permits/approvals will include:

- Freehold Soil Conservation District – Soil Erosion and Sediment Control Certification
- Local Construction Permits if applicable
- Compliance with NJDEP Stormwater Management Rules

f. Natural Heritage Data Request

Potential wildlife impacts associated with the proposed construction of the park improvements would be minimal and primarily related to short-term construction activities. These may include:

- Temporary disturbance to common species resulting from noise, vibration, and increased human presence.
- Minor displacement of wildlife occupying lawn areas or ornamental vegetation within the construction limits.
- Removal of small patches of maintained grass or limited vegetation that currently provide low-quality habitat.

No long-term adverse effects to wildlife are anticipated as no threatened or endangered species are located within the immediate vicinity of the site. Project improvements will



take place within a previously developed park. The completed park improvements would function similarly to the existing maintained landscape, which already provides minimal habitat value. The project would not alter any natural communities, watercourses, or wooded areas that support wildlife at a broader scale.

g. Discussion on sea level rise

Sea level rise is not anticipated to have a major impact on this project as it is located outside of the flood hazard area and about 0.3 miles from the nearest tidal waterway, the Swimming River.

ALTERNATIVES TO THE PROPOSED ACTION

a. Identify alternate sites

No alternative sites were identified for this project due to the goal of the project being to revitalize and enhance the park and its features. However, alternative designs were explored for the park.

b. Discussion on alternate levels and types of development

Primary considerations taken for the design of the park improvements include the construction of a concrete stage platform, a seating area and lawn space, and accessible features as well as opportunities for passive recreational activities while preserving open space. Two alternatives were proposed for the Johnny Jazz Park improvements, each of which included similar improvements with different layouts.

Alternative 1: No-Action

The no-action alternative would leave the park in its existing condition with no designated stage, limited seating areas, and insufficient recreational amenities. The no-action alternative would not provide the park with improvements that would enhance community use of the park for concerts, gatherings, and recreational enjoyment. This alternative would not address the limitations and insufficient amenities within the park and would not encourage community use of the park; therefore, it is not the preferred alternative.

Alternative 2: Concept 2

Concept 2 proposes a concrete stage platform with decorative paver block steps at the northwestern corner, a concrete ADA walk/ramp along the western side of the park, as



well as an open lawn area across the central portion of the park. The concept also included decorative game tables along a paver walkway/patio, a 6' wide concrete walkway, outdoor musical instruments, and a paver block seat wall along the eastern side of the park. Landscaping improvements are located along the perimeter of the site.

Alternative 3: Concept 3

Concept 3 proposes a concrete stage platform with decorative paver block steps at the northwestern corner, a concrete ADA walk/ramp along the western side of the park, as well as an open lawn area across the central portion of the park. Concept 3 proposes a paver walkway leading to the stage platform that bisects the open lawn area. Landscape improvements are proposed along the perimeter of the site with a paver block seat wall at the eastern and southern portions of the park, as well as outdoor musical instruments.

Ultimately, the chosen design was based on the master plan which merged ideas from each of the concepts while emphasizing open space with a sizeable event lawn, the inclusion of a concrete stage platform, providing seating areas and walkways, and preserving large trees on site where possible.

c. Comparing environmental impacts of each alternative

The proposed improvements are preferred as they align with the goals of enhancing accessibility and recreational opportunities while preserving open space. Alternative 2 provides less accessibility while Alternative 3 decreases the area of open space through the construction of a concrete walkway that bisects the lawn area. No environmental impacts to regulated areas would occur as a result of any of the proposed alternatives; however, the chosen concept more adequately addresses the goals of the creation of a performance stage with an open lawn area and passive recreational opportunities while preserving existing trees onsite.

MITIGATING MEASURES

Measures will be taken to mitigate for any adverse impacts to the project site. Tree protection and will be utilized during design and construction phases to minimize impacts to existing trees onsite. Additionally, the Borough is proposing landscaping improvements and the planting of ornamental trees shrubs and herbaceous vegetation for the park improvements to offset disturbances and enhance habitat quality. The construction activities will take place within previously developed areas and will not impact any undisturbed land. All necessary soil erosion and sediment control measures will be taken. Dust control measures including watering and covering stockpiles as well as noise minimization and temporary signage will be utilized during the construction phase. There



will be no riparian zone, flood hazard area, or wetland disturbance as a result of the project improvements.

AUTHORS AND QUALIFICATIONS

- Austin Bazuk, Associate Project Manager, CME Associates.
- Haley Wilmot, Associate Scientist, CME Associates.



REFERENCES

Kummel, H.B. (1940) The Geology of New Jersey; Department of Conservation and Development, State of New Jersey.

New Jersey Department of Environmental Protection (July 2023) Stormwater Best Management Practices Manual.

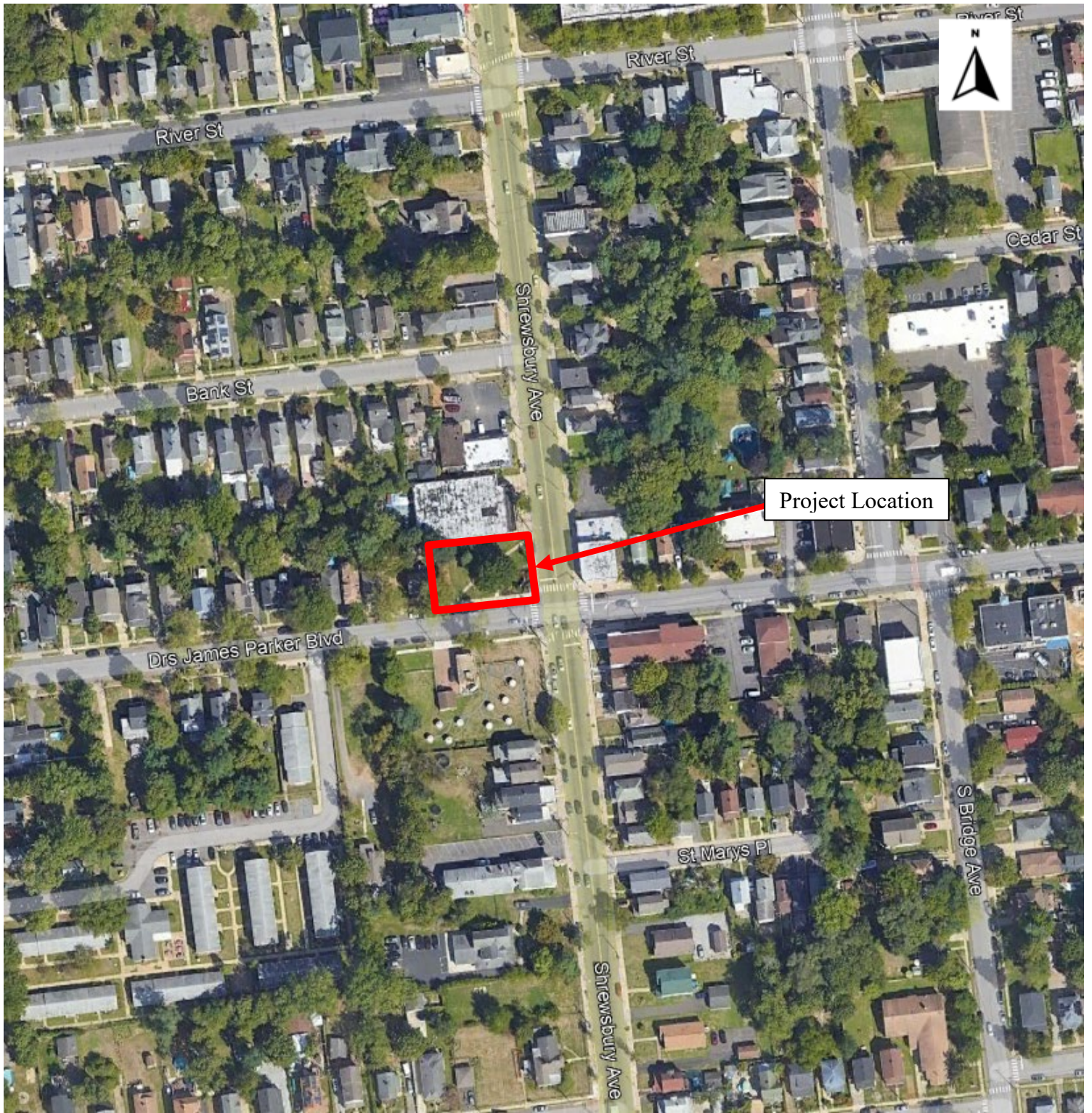
New Jersey Department of Environmental Protection (August 2023) Surface Water Quality Standards, N.J.A.C. 7:9B.

New Jersey Department of Environmental Protection (July 2023) Flood Hazard Area Control Act Rules, N.J.A.C. 7:13.

NJDEP-GeoWeb3.0. State of New Jersey. <<https://www.nj.gov/dep/gis/geoweb splash.htm>>



Appendix A: Map Graphics

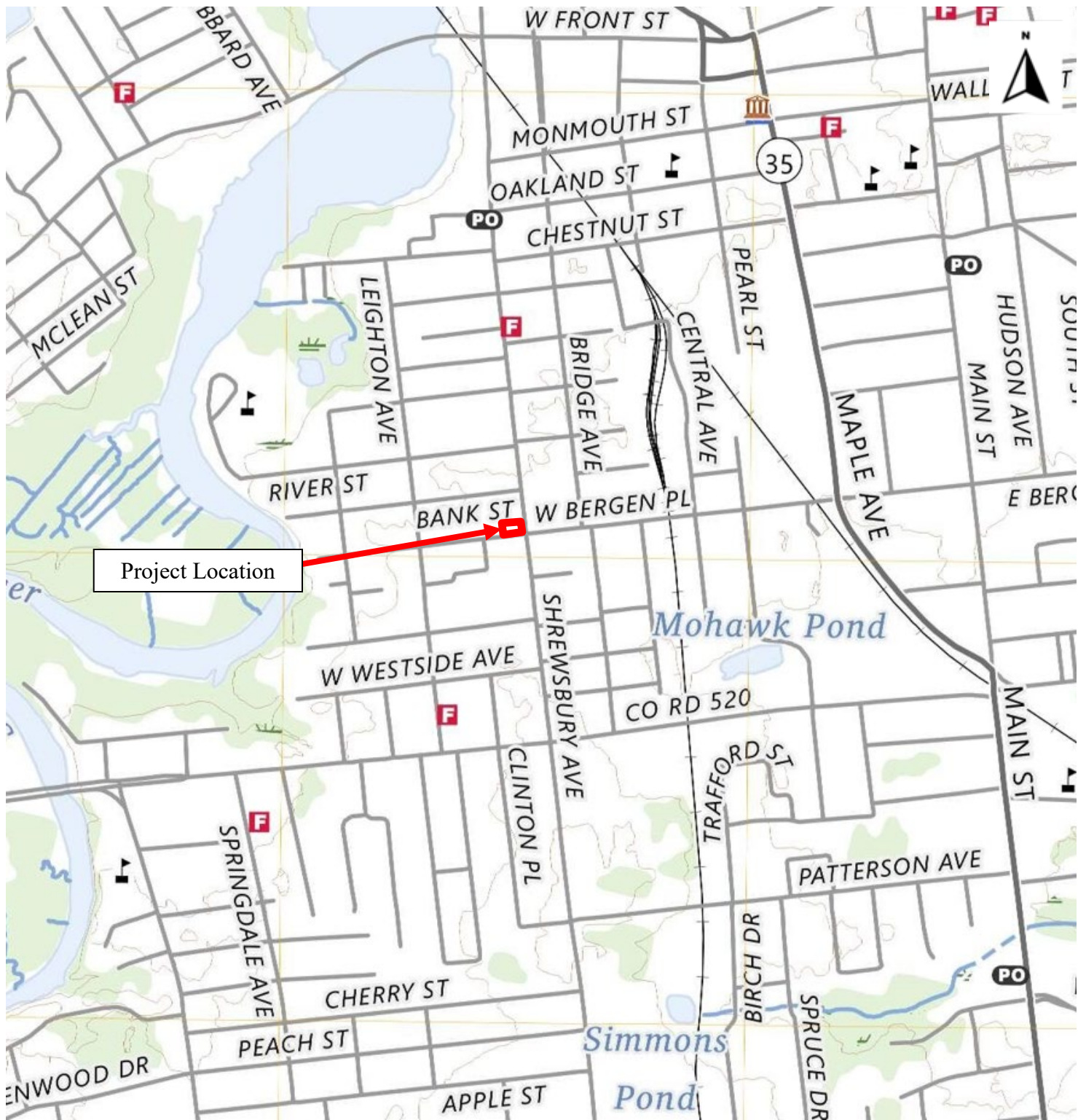


LOCATION MAP
Johnny Jazz Park

LOCATION: Dr's. James Parker Blvd. & Shrewsbury Ave.
MUNICIPALITY: Borough of Red Bank
BLOCK: 79
LOT: 23
COUNTY: Monmouth
FILE NO: 115.RB00003.H25



ASSOCIATES
CONSULTING AND MUNICIPAL ENGINEERS
NJ CERTIFICATE OF AUTHORIZATION NO. 246A28359000
1 TOWER CENTER BLVD., 20TH FLOOR, EAST BRUNSWICK, NJ 08816



U.S.G.S. QUAD MAP

Johnny Jazz Park

SHEET: Long Branch West Quadrangle

LOCATION: Dr's. James Parker Blvd. & Shrewsbury Ave.

MUNICIPALITY: Borough of Red Bank

BLOCK: 79

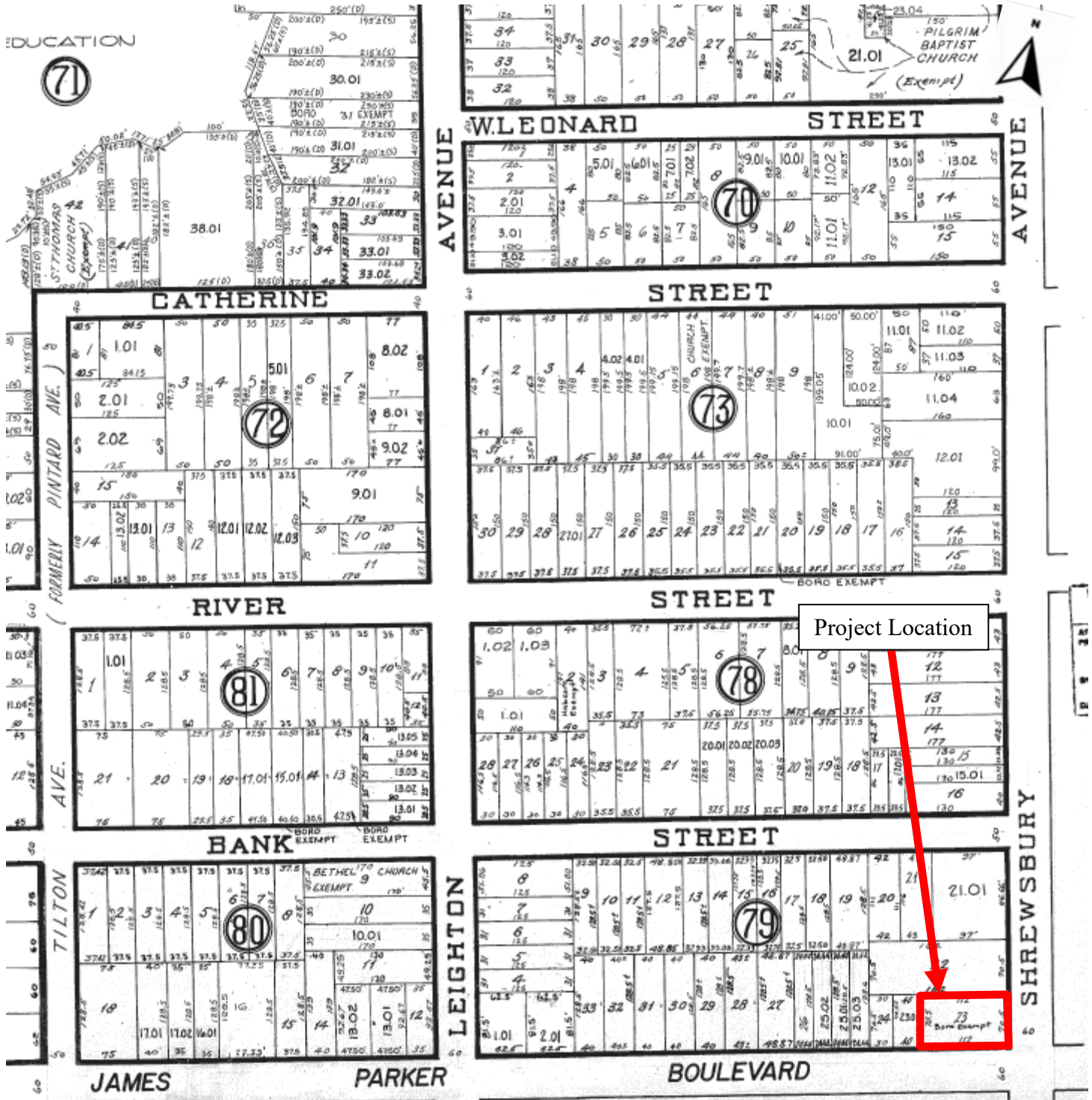
LOT: 23

COUNTY: Monmouth

FILE NO: 115.RB00003.H25



ASSOCIATES
CONSULTING AND MUNICIPAL ENGINEERS
NJ CERTIFICATE OF AUTHORIZATION NO. 24GA28359000
1 TOWER CENTER BLVD., 20TH FLOOR, EAST BRUNSWICK, NJ 08816



TAX MAP Johnny Jazz Park

SHEET: 10
LOCATION: Dr's. James Parker Blvd. & Shrewsbury Ave.
MUNICIPALITY: Borough of Red Bank
BLOCK: 79
LOT: 23
COUNTY: Monmouth
FILE NO: 115.RB00003.H25



FEMA MAP
Johnny Jazz Park

PANEL: 179G

LOCATION: Dr's. James Parker Blvd. & Shrewsbury Ave.

MUNICIPALITY: Borough of Red Bank

BLOCK: 79

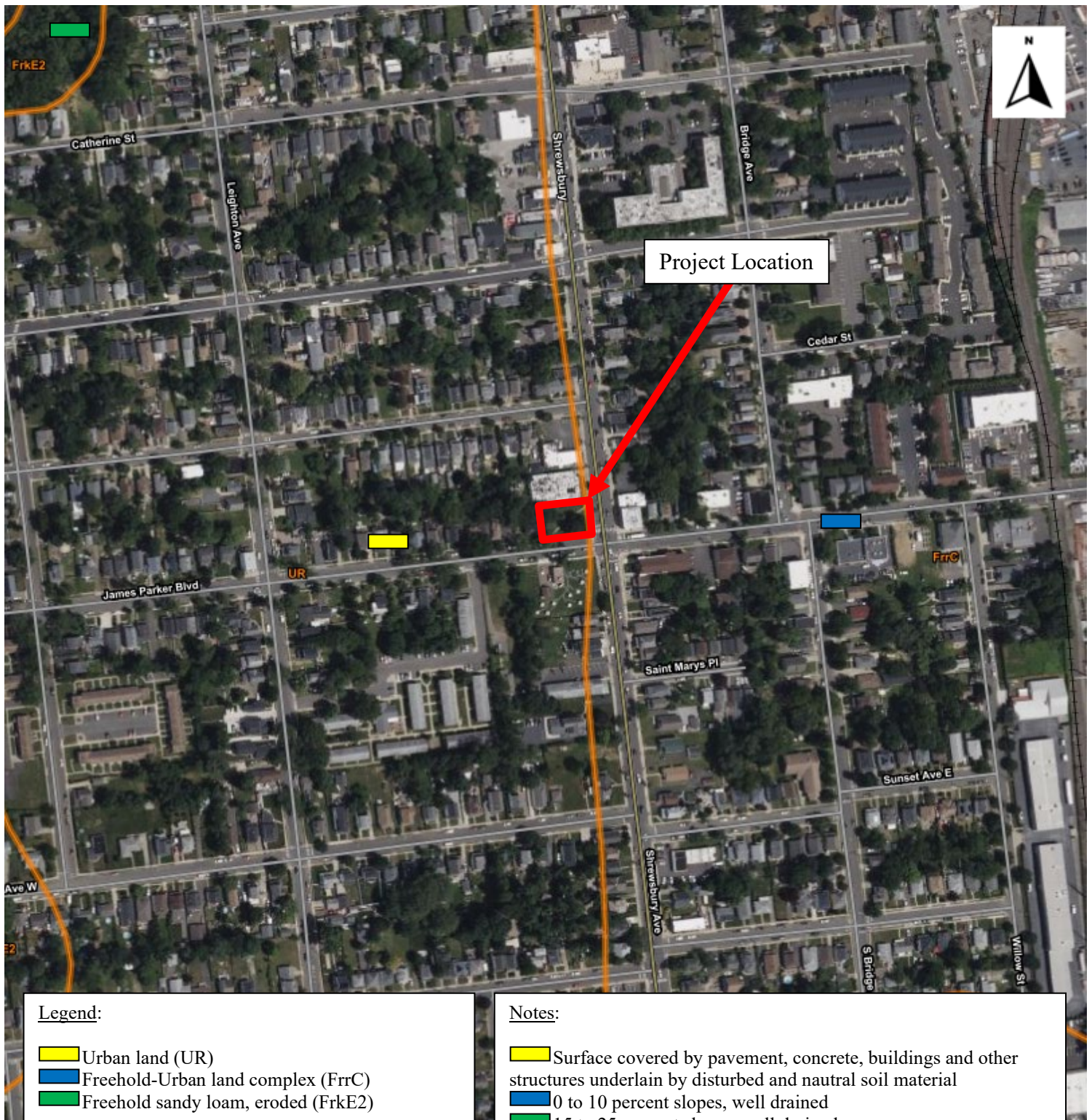
LOT: 23

COUNTY: Monmouth

FILE NO: 115.RB00003.H25



ASSOCIATES
CONSULTING AND MUNICIPAL ENGINEERS
NJ CERTIFICATE OF AUTHORIZATION NO. 24GA28359000
1 TOWER CENTER BLVD., 20TH FLOOR, EAST BRUNSWICK, NJ 08816



Legend:

- Urban land (UR)
- Freehold-Urban land complex (FrrC)
- Freehold sandy loam, eroded (FrkE2)

Notes:

- Surface covered by pavement, concrete, buildings and other structures underlain by disturbed and natural soil material
- 0 to 10 percent slopes, well drained
- 15 to 25 percent slopes, well drained

SOIL SURVEY MAP

Johnny Jazz Park

LOCATION: Dr's. James Parker Blvd. & Shrewsbury Ave.

MUNICIPALITY: Borough of Red Bank

BLOCK: 79

LOT: 23

COUNTY: Monmouth

FILE NO: 115.RB00003.H25



ASSOCIATES
CONSULTING AND MUNICIPAL ENGINEERS
NJ CERTIFICATE OF AUTHORIZATION NO. 246A28359000
1 TOWER CENTER BLVD., 20TH FLOOR, EAST BRUNSWICK, NJ 08816



Appendix B: Site Photographs



PHOTO LOCATION MAP
Johnny Jazz Park Improvements

LOCATION: Drs. James Parker Blvd. & Shrewsbury Ave.

MUNICIPALITY: Borough of Red Bank

BLOCK: 79

LOT: 23

COUNTY: Monmouth

FILE NO: 115.RB00003.H25



ASSOCIATES
CONSULTING AND MUNICIPAL ENGINEERS
NJ CERTIFICATE OF AUTHORIZATION NO. 24GA28359000
— 1 TOWER CENTER BLVD., 20TH FLOOR, EAST BRUNSWICK, NJ 08816 —

VIEW A

An aerial view of Johnny Jazz Park.



VIEW B

Viewing northeast from
Drs James Parker
Boulevard towards Johnny
Jazz Park.



SITE PHOTOGRAPHS
Johnny Jazz Park Improvements

LOCATION: Drs. James Parker Blvd. & Shrewsbury Ave.
MUNICIPALITY: Borough of Red Bank
BLOCK: 79
LOT: 23
COUNTY: Monmouth
FILE NO: 115.RB00003.H25



ASSOCIATES
CONSULTING AND MUNICIPAL ENGINEERS
NJ CERTIFICATE OF AUTHORIZATION NO. 24GA28359000
1 TOWER CENTER BLVD., 20TH FLOOR, EAST BRUNSWICK, NJ 08816

VIEW C

Viewing west from
Shrewsbury Avenue
towards Johnny Jazz Park.



ASSOCIATES
CONSULTING AND MUNICIPAL ENGINEERS
NJ CERTIFICATE OF AUTHORIZATION NO. 24GA28359000
1 TOWER CENTER BLVD., 20TH FLOOR, EAST BRUNSWICK, NJ 08816

SITE PHOTOGRAPHS

Johnny Jazz Park Improvements

LOCATION: Drs. James Parker Blvd. & Shrewsbury Ave.

MUNICIPALITY: Borough of Red Bank

BLOCK: 79

LOT: 23

COUNTY: Monmouth

FILE NO: 115.RB00003.H25



Appendix C: Natural Heritage Database Results



State of New Jersey

DEPARTMENT OF ENVIRONMENTAL PROTECTION

STATE PARKS, FORESTS & HISTORIC SITES
OFFICE OF NATURAL LANDS MANAGEMENT

501 East State Street

P.O. Box 420, Mail Code 501-04

Trenton, New Jersey 08625-0420

Tel. (609) 984-1339 * Fax (609) 984-1427

<https://www.nj.gov/dep/parksandforests/natural/index.html>

PHILIP D. MURPHY

Governor

TAHESHA L. WAY

Lt. Governor

SHAWN M. LATOURETTE

Commissioner

December 13, 2025

Haley Wilmot
CME Associates
849 West Bay Avenue - Suite 16
Barnegat, NJ 08005

Re: Johnny Jazz Park
Block(s) - 79, Lot(s) - 23
Red Bank Borough, Monmouth County

Haley Wilmot:

Thank you for your data request regarding rare species information for the above referenced project site.

Searches of the Natural Heritage Database and the Landscape Project (Version 3.4) are based on a representation of the boundaries of your project site in our Geographic Information System (GIS). We make every effort to accurately transfer your project bounds from the map(s) submitted with the Natural Heritage Data Request Form into our GIS. We do not typically verify that your project bounds are accurate or check them against other sources.

We have checked the Landscape Project habitat mapping for occurrences of any rare wildlife species or wildlife habitat on the referenced site. The Natural Heritage Biotics Database was searched for occurrences of rare plant species or ecological communities that may be on the project site. Please refer to Table 1 (attached) to determine if any rare plant species, ecological communities, or rare wildlife species or wildlife habitat are documented on site. A detailed report is provided for each category coded as 'Yes' in Table 1.

We have also checked the Landscape Project habitat mapping for occurrences of rare wildlife species or wildlife habitat in the immediate vicinity (within ¼ mile) of the referenced site. Additionally, the Natural Heritage Biotics Database was checked for occurrences of rare plant species or ecological communities within ¼ mile of the site. Please refer to Table 2 (attached) to determine if any rare plant species, ecological communities, or rare wildlife species or wildlife habitat are documented within the immediate vicinity of the site. Detailed reports are provided for all categories coded as 'Yes' in Table 2. These reports may include species that have also been documented on the project site.

We have also checked the Landscape Project habitat mapping for all occurrences of rare wildlife species or wildlife habitat within one mile of the referenced site. Please refer to Table 3 (attached) to determine if any rare wildlife species or wildlife habitat is documented within one mile of the project site. Detailed reports are provided for each category coded as 'Yes' in Table 3. These reports may include species that have also been documented on the project site.

For requests submitted in order to make a riparian zone width determination as part of a Flood Hazard Area Control Act (FHACA) rule application, we report records for all rare plant species and ecological communities tracked by the Natural Heritage Program that may be on, or in the immediate vicinity of, your project site. A subset of these plant species is also covered by the FHACA rules when the records are located within one mile of the project site. One-mile searches for FHACA plant species will only report precisely located occurrences for those wetland plant species identified under the FHACA regulations as being critically dependent on the watercourse. Please refer to Table 3 (attached) to determine if any

NHP File No. 25-4007338-35458

precisely located rare wetland plant species covered by the FHACA rules have been documented. Detailed reports are provided for each category coded as 'Yes' in Table 3. These reports may include species that have also been documented on, or in the immediate vicinity of, the project site.

The Natural Heritage Program reviews its data periodically to identify priority sites for natural diversity in the State. Included as priority sites are some of the State's best habitats for rare and endangered species and ecological communities. Please refer to Tables 1, 2 and 3 (attached) to determine if any priority sites are located on, in the immediate vicinity, or within one mile of the project site.

A list of rare plant species and ecological communities that have been documented from the county (or counties), referenced above, can be downloaded from <https://nj.gov/dep/parksandforests/natural/heritage/database.html>. If suitable habitat is present at the project site, the species in that list have potential to be present.

Status and rank codes used in the tables and lists are defined in EXPLANATION OF CODES USED IN NATURAL HERITAGE REPORTS, which can be downloaded from https://nj.gov/dep/parksandforests/natural/docs/nhpcodes_2010.pdf.

Beginning January 6, 2025, the Natural Heritage Program reports for wildlife species will utilize data from Landscape Project Version 3.4. If you have questions concerning the wildlife records or wildlife species mentioned in this response, we recommend that you visit the interactive web application at the following URL, <https://dep.nj.gov/njfw/landscapeapp/>, or contact the Division of Fish and Wildlife, Endangered and Nongame Species Program at (609) 292-9400.

Occurrences of Bald Eagle nest and roost habitat have "special concern" rank and are included in Landscape Project Version 3.4. The DEP also recognizes that the U.S. Fish & Wildlife Service maintains additional jurisdiction pursuant to the Bald and Golden Eagle Protection Act (BGEPA). They provide guidance to avoid negative impacts in the "National Bald Eagle Management Guidelines" document found at https://www.fws.gov/sites/default/files/documents/national-bald-eagle-management-guidelines_0.pdf. They also provide a screening tool to help identify activities that may require a Federal permit, at <https://www.fws.gov/media/northeast-bald-eagle-project-screening-form>.

For occurrences of Osprey nests and other bird nests that persist year to year, active nests continue to be protected from disturbance that can result in "take" (i.e., disturbance that can cause abandonment or loss) pursuant to the NJ Endangered and Nongame Species Conservation Act (ENSCA) and the Federal Migratory Bird Treaty Act. As a result of delisting of Osprey to "stable" conservation status, Osprey nests are not represented in Landscape Project maps, but nest locations are available online at www.Osprey-Watch.org.

For additional information regarding any Federally listed plant or animal species, please contact the U.S. Fish & Wildlife Service, New Jersey Field Office at <http://www.fws.gov/northeast/njfieldoffice/endangered/consultation.html>.

Information supplied by the Natural Heritage Program summarizes existing data known to the program at the time of the request regarding the biological elements (species and/or ecological communities) or their locations. They should never be regarded as final statements on the elements or areas being considered, nor should they be substituted for on-site surveys required for environmental assessments.

Thank you for consulting the Natural Heritage Program. The attached invoice details the payment due for processing this data request. Feel free to contact us again regarding any future data requests.

Sincerely,



Robert J. Cartica
Administrator

c: NHP File No. 25-4007338-35458

NHP File No. 25-4007338-35458

Table 1: On Site Data Request Search Results (6 Possible Reports)

| <u>Report Name</u> | <u>Included</u> | <u>Number of Pages</u> |
|--|------------------------|-------------------------------|
| 1. Possibly on Project Site Based on Search of Natural Heritage Database: Rare Plant Species and Ecological Communities Currently Recorded in the New Jersey Natural Heritage Database | No | 0 pages included |
| 2. Natural Heritage Priority Sites On Site | No | 0 pages included |
| 3. Rare Wildlife Species or Wildlife Habitat on the Project Site Based on Search of Landscape Project 3.4 Species Based Patches | No | 0 pages included |
| 4. Vernal Pool Habitat on the Project Site Based on Search of Landscape Project 3.4 | No | 0 pages included |
| 5. Rare Wildlife Species or Wildlife Habitat on the Project Site Based on Search of Landscape Project 3.4 Stream Habitat File | No | 0 pages included |

Table 2: Vicinity Data Request Search Results (6 possible reports)

| <u>Report Name</u> | <u>Included</u> | <u>Number of Pages</u> |
|--|------------------------|-------------------------------|
| 1. Immediate Vicinity of the Project Site Based on Search of Natural Heritage Database: Rare Plant Species and Ecological Communities Currently Recorded in the New Jersey Natural Heritage Database | No | 0 pages included |
| 2. Natural Heritage Priority Sites within the Immediate Vicinity | No | 0 pages included |
| 3. Rare Wildlife Species or Wildlife Habitat Within the Immediate Vicinity of the Project Site Based on Search of Landscape Project 3.4 Species Based Patches | No | 0 pages included |
| 4. Vernal Pool Habitat In the Immediate Vicinity of Project Site Based on Search of Landscape Project 3.4 | No | 0 pages included |
| 5. Rare Wildlife Species or Wildlife Habitat In the Immediate Vicinity of the Project Site Based on Search of Landscape Project 3.4 Stream Habitat File | No | 0 pages included |

***Table 3: Within 1 Mile for Riparian Zone Width Determination
(6 possible reports)***

| <u>Report Name</u> | <u>Included</u> | <u>Number of Pages</u> |
|---|------------------------|-------------------------------|
| 1. Rare Plant Species Occurrences for Riparian Zone Width Determination (Flood Hazard Area Control Act Rule Application) - Within One Mile of the Project Site Based on Search of Natural Heritage Database | No | 0 pages included |
| 2. Natural Heritage Priority Sites for Riparian Zone Width Determination - Within One Mile of the Project Site | No | 0 pages included |
| 3. Rare Wildlife Species or Wildlife Habitat for Riparian Zone Width Determination - Within One Mile of the Project Site Based on Search of Landscape Project 3.4 Species Based Patches | Yes | 1 page(s) included |
| 4. Vernal Pool Habitat for Riparian Zone Width Determination - Within One Mile of the Project Site Based on Search of Landscape Project 3.4 | No | 0 pages included |
| 5. Rare Wildlife Species or Wildlife Habitat for Riparian Zone Width Determination - Within One Mile of the Project Site Based on Search of Landscape Project 3.4 Stream Habitat File | No | 0 pages included |

| |
|--|
| <p>Rare Wildlife Species or Wildlife Habitat for Riparian Zone Width Determination</p> <p>Within One Mile of the Project Site</p> <p>Based on Search of Landscape Project 3.4 Species Based Patches</p> |
|--|

| Class | Common Name | Scientific Name | Feature Type | Rank | Federal Protection Status | State Protection Status | Grank | Strank |
|------------------------|----------------------------------|--------------------------|--------------------------|------|---------------------------|-------------------------|-------|---------|
| <i>Aves</i> | | | | | | | | |
| | Bald Eagle | Haliaeetus leucocephalus | Foraging | 2 | NA | Special Concern | G5 | S3B,S4N |
| | Bald Eagle | Haliaeetus leucocephalus | Nest | 2 | NA | Special Concern | G5 | S3B,S4N |
| | Black-crowned Night-heron | Nycticorax nycticorax | Foraging | 3 | NA | State Threatened | G5 | S2B,S3N |
| | Common Tern | Sterna hirundo | Foraging | 2 | NA | Special Concern | G5 | S3B,S4N |
| | Great Blue Heron | Ardea herodias | Foraging | 2 | NA | Special Concern | G5 | S3B,S4N |
| <i>Mammalia</i> | | | | | | | | |
| | Eastern Red Bat | Lasiurus borealis | Inactive Season Sighting | 2 | NA | Special Concern | G3G4 | S3 |
| <i>Reptilia</i> | | | | | | | | |
| | Northern Diamond-backed Terrapin | Malaclemys terrapin | Occupied Habitat | 2 | NA | Special Concern | G4T4 | S3 |



Appendix D: Authors and Qualifications

AUSTIN BAZUK

ASSOCIATE PROJECT MANAGER



EDUCATION/CERTIFICATIONS

Susquehanna University
Selinsgrove, PA
Bachelor of Earth and Environmental Sciences

Rutgers University for Continuing Professional Education
Wetland Delineation Certificate (2022)

30-Hour OSHA Construction Safety and Health (2020)

40-Hour OSHA Hazardous Waste Site Operations Health and Safety Certification (2024)

8-Hour HAZWOPPER refresher (yearly since 2024)

Endangered Species Act, Wetlands, & Stormwater regulatory Compliance for Energy & Utilities, ECUI (2025)

GENERAL EXPERIENCE:

Mr. Bazuk is experienced in Environmental Regulatory Compliance at the State and Federal levels, with a multidisciplinary background supporting environmental feasibility evaluations. Areas of expertise include freshwater wetlands, flood hazard areas, coastal wetlands, CAFRA, waterfront development, tidelands claim, and stormwater management.

DETAILED EXPERIENCE:

Marlboro Township: Improvements to Harbor Road
Project entailed the preparation of flood hazard area and freshwater wetlands general permits for roadway improvements and the replacement of a culvert crossing a tributary of the Deep Run.

Monmouth County: Improvements to County Route 3
Project entailed the preparation of flood hazard area and freshwater wetland individual permits for reconstruction, widening, and realignment of several sections of County Route 3.

Bergen County: County Road Culvert

Project entailed the preparation and submission of flood hazard area individual permit and a Freshwater wetlands general permit for the reconstruction of a culvert washed out by Hurricane Ida. The application submission was made to follow up an emergency permit submission.

Union County: Phil Rizzuto Park Stream Enhancement

Project involved the preparation and submission of freshwater wetlands and flood hazard area permits, as well as coordination with the Historic Preservation Office for the submission of an Application for Project Authorization.

Brick Township: Mallard Point Park Improvements

Project involved the preparation and submission of CAFRA, freshwater wetland, flood hazard area, and Army Corps of Engineers permits for the beachfront park improvements.

Lakewood Township: Sanitary Sewer Extension

Project entailed the preparation of a CAFRA permit for an extensive linear MUA improvement project to extend the limits of the sanitary sewer line under major roads.

Middlesex County: Improvements to CR 535 Washington Road
Project entailed the preparation of a flood hazard area individual permit for the improvements to the intersection of CR 535 Washington Road and CR 675 Jernee Mill Road, MacArthur Avenue and Furman Avenue.

Borough of Red Bank: Marine Park Parking Lot

Project entailed the preparation of a CAFRA individual permit for the construction of a public parking lot for Marine Park, located along the Navesink River which is a Category 1 water.

Union County: Clark Reservoir Improvements

Project entailed preparation of an NJDEP Flood Hazard Area Verification, Flood Hazard Area Individual Permit, Freshwater Wetlands General Permit 11 – Outfalls and Intake Structures, Freshwater Wetlands General Permit 17 – Trails and Boardwalks, and Freshwater Wetlands General Permit 19 – Docks and Piers for the County of Union. This project involved the dredging of 154,000 cubic yards of sediment from the reservoir and construction of park amenities including a perimeter pedestrian path, boat house, boat ramp, piers, docks, site access, lighting, drainage and stormwater management.

Camden County: Wiggins Marina Improvements

Project entailed the preparation of an NJDEP In-Water Waterfront Development Individual Permit and Letter of Permission from the US Army Corps of Engineers for Camden County. These permits authorized the replacement and expansion of the docking facility at Wiggins Park Marina in the City of Camden along the Delaware River. A total of 77 new boat slips were installed including a 10' x 64' floating dock for emergency services.

North Brunswick Township: Improvements to Evelyn Avenue

Project entailed the preparation of a freshwater wetlands general permit for roadway and drainage improvements along Evelyn Avenue.

VARIOUS ENGINEERING PROJECT TASKS

- Manage and oversee environmental regulatory compliance and impact evaluations under State and Federal regulations
- Lead and perform field investigations, including freshwater wetland delineations and soil sampling
- Prepare, submit, and manage Environmental Reports and permit applications to outside agencies such as NJDEP and U.S. Army Corps of Engineers
- Coordinate multidisciplinary project tasks, schedules, and agency coordination
- Review and provide technical comments on site plan and subdivision applications
- Prepare, review, and QA/QC technical reports and regulatory documentation

EXPERIENCE:

Project Manager Experience: 5 years

HALEY WILMOT

ASSOCIATE SCIENTIST



EDUCATION/CERTIFICATIONS

Stockton University

B.S., Environmental Science; 2021

40-Hour OSHA Hazardous Waste Site Operations Health and Safety Certification (2024)

8-Hour HAZWOPER refresher (yearly since 2024)

Rutgers University for Continuing Professional Education Wetland Delineation Certificate (2024)

GENERAL EXPERIENCE:

Ms. Wilmot has been working at CME Associates as an Associate Scientist since March 2024. Her experience includes permitting work in compliance with NJDEP regulations, including Freshwater Wetlands, Flood Hazard Areas, CAFRA, and Waterfront Development. She has experience compiling permitting applications, writing Environmental Reports, and assisting with wetland delineations for clients throughout New Jersey.

SUMMARY OF EXPERIENCE:

Permitting – Municipal/County Clients

- Prepared municipal and county environmental permitting applications, including Freshwater Wetlands and Flood Hazard Areas.
- Prepared required NJDEP forms and documents including Public Notification, Natural Heritage Database Requests, compliance statements, site maps, photo logs and location maps.
- Performed permit plan markups to ensure compliance with NJDEP regulations.
- Prepared project site summaries and permitting scopes to evaluate permitting requirements.
- Prepared Environmental Reports in accordance with State and Federal Regulations.

Wetland Delineations

- Conducted site pre-assessments for indications of the presence of freshwater wetlands.
- Assessed site hydrology and vegetation for use in making wetland determinations.
- Performed soil sampling for the evaluation of hydric soil indicators.
- Prepared soil logs for wetland and upland sampling sites.

DETAILED EXPERIENCE:

Long Branch City – Ivy Place Drainage Improvements

Assisted in obtaining a Waterfront Development Individual Permit and a Freshwater Wetlands General Permit 11 for the reconstruction of two inlets, installation of conveyance pipes,

excavation of the ditch, and installation of riprap to stabilize the area and enhance drainage.

Bloomfield Township – James Street Bridge Stabilization

Assisted in obtaining a Flood Hazard Area Individual Permit and a Freshwater Wetlands General Permit 20 for the bank stabilization within the Passaic River Basin including the repair of the onsite failing gabion basket wall.

Keyport Borough – Fireman's Park Bulkhead

Assisted in obtaining a Waterfront Development Individual Permit for the reconstruction of the bulkhead, the removal of three outfalls, and the installation of two new outfalls within the Luppapatong Creek.

Red Bank Borough – Marine Park Improvements

Assisted in obtaining a Waterfront Development Individual Permit for the construction of a kayak launch, jet ski ports, a floating boat lift, stormwater check valves, and a fire hydrant intake pipe the Navesink River.

Somerset County – Lloyd Road Bridge

Assisted in obtaining a Freshwater Wetlands General Permit 10A and a Flood Hazard Area General Permit 10 for the replacement of Somerset County Bridge G1404 along a tributary to the Indian Grove Brook.

Delran Township – Haines Mill Road Stabilization

Assisted in obtaining a Flood Hazard Area Individual Permit and a Freshwater Wetlands General Permit 20 for the stabilization of a stream bank along Haines Mill Road.

Union County Improvement Authority – Green Lane Park

Assisted in obtaining a Flood Hazard Area Individual Permit and a Freshwater Wetlands General Permit 17 for park and trail improvements at Green Lane Park.

Peter McGillan Excavating, LLC. – Canoe Brook County Club Dredging

Assisted in obtaining a Flood Hazard Area Individual Permit and a Freshwater Wetlands General Permit 13 for the removal of sediment from 9 ponds within the Canoe Brook Country Club located along the Passaic River tributary and the Canoe Brook tributary.

EXPERIENCE WITH CME ASSOCIATES:

Associate Scientist: 2 years

OTHER EXPERIENCE:

Wildlife Research Technician – Texas A&M University (2023)

Shorebird Steward – Suffolk County Parks, Endangered Species Program (2022)

Seasonal Park Ranger – Somerset County Park Commission (2021)